



CORDY'S
AUCKLAND

ANTIQUUE & ART AUCTION

17TH OCTOBER 2017



THE ANNEKE BORREN COLLECTION

An Artists Home A Makers Collection

To be offered for auction October 31st

I arrived in New Zealand in early 1963, as a 16yr old, and a burgeoning potter. I quickly became part of this clay movement, and still am.

My home and the collection I have built up throughout my career has become a tribute to those "makers of clay". The collection has come from my colleagues and their work. Their artistic essence has graced my home for decades. "I have dusted my friends once a fortnight, meet them again and remembered their stories".

A "Makers collection" is very different from a "Collectors collection", because it carries "the intimacy of knowing, feeling, and instant recognition".

My living with these treasures has enriched me totally, and I will carry the memories and its spirit within me.

Included in this collection is my own historical pottery collection. Since 1964 I have kept "the first of the idea putting together my own three dimensional C.V. My grateful thanks go to Roy Cowan, and Juliet Peter, who introduced to the New Zealand potting community and involved me from the beginning.

Howard Williams for his photography and Andrew Grigg, who understands the importance of the N.Z. Ceramics market.

And last but definitely not least my daughters, Tahī, and Tamara, who encouraged me to "let go".

ANNEKE BORREN

Recent Auction Highlights



An estate white gold ladies 2.26ct diamond solitaire ring . Achieved \$15,000



A pair of modern lady's 18ct. white gold diamond and rubellite drop earrings. Achieved \$3,600



An impressive large Len Castle branch pot. Achieved \$5,000



A pair of Chinese cloisonné vases. Achieved \$2,800



An Italian alabaster bust of a young woman. Achieved \$3,900



A rare and historically important George III lidded Scottish silver large tureen. Achieved \$6,500



An outstanding white gold, star sapphire and diamond pendant . Achieved \$8,000



A good Barry Brickell salt glazed dog boat . Achieved \$17,500



An impressive fancy yellow multi-diamond and 18ct. yellow gold bracelet. Achieved \$17,000



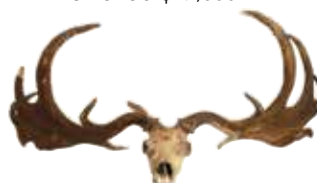
Don Binney, Pipiwharaurua . Achieved \$90,000



A large-scale model of the clipper ship 'Canterbury' . Achieved \$3,500



An impressive 18ct gold, diamond and tourmaline dress ring . Achieved \$5,500



A set of extinct Irish elk horns and skull . Achieved \$28,000



A finely carved 'palm' (fingering) piece in rich red lacquered amber Achieved \$15,000



A rare N.Z. 1935 Waitangi Crown. Achieved \$5,500



A quality large Roy Cowan (CNZM MBE 1918-2006) salt glazed floor pot Achieved \$12,000



Sydney Lough Thompson, 'Fishers at Work, Concarneau'. Achieved \$9,500

Invest in the future



www.antiquesaregreen.org

recycle the past.

NOTE: Hammer prices shown excluding premium.



Antique & Art Catalogue

We are privileged to offer The Slater Collection Part I of New Zealand historical pottery including many fine examples of rare Crown Lynn, Wharetana ware, etc., many coloured McAlpine fridge jugs, trickle glazed animals, Titian ware, etc. also included from various estates and private vendors we have fishing items, a wide array of miscellaneous, taxidermy, military, New Zealand historical, art glass, Skeaping Wedgwood animals, fine porcelain and China, Worcester, Moorcroft, etc. The Oriental section of over 100 lots includes Chinese jade, porcelain, ivory, etc. At 5pm we have the jewellery section of 120 lots which includes a spectacular diamond necklace, diamond bangles, bracelets, earrings, a good selection of precious stone rings, etc., Rolex watches, cased ships chronometer, French clocks, long case clocks, collectors silver, a good selection of Georgian, Victorian, colonial and Oriental furniture and decorator items. The art section is one of our strongest for many months including good examples of modern, contemporary and historical works by Peter McIntyre, Rudi Gopas, Steve Harris, Robin Morrison, Tapper, Payton, Raymond Ching etc. This auction is a must view.

Tuesday 17th October 2017 at 9.30am

The Slater Collection	1 - 121
Miscellaneous	122 - 198
Militaria	199 - 212
Artefacts, Tribal & NZ Historical	213 - 236
N.Z.Studio Art	237 - 254
Glass	255 - 265
Modern Movement	266 - 277
China & Porcelain	278 - 310
Oriental	311 - 407

Tuesday 17th October 2017 at 5.00pm

Jewellery	410 - 537
Clocks & Watches	538 - 556
Silver	557 - 630
Persian Rugs	631 - 663
Furniture	664 - 729
Fine Art	730 - 822

Please note all lots are illustrated in our online catalogue; www.cordys.co.nz

The sale may be viewed at the following times:

Friday 13 th October	9.00am - 5.00pm
Sunday 15 th October	11.00am - 3.00pm
Monday 16 th October	9.00am - 5.00pm

FRONT COVER LOTS



Lot 719
Black Forest
Clock



Lot 713
Bureau Plat



Lot 469
Diamond
and Rubellite
Bracelet



Lot 65
Crown Lynn
Wharetana
Bookends



Lot 767 Peter
McIntyre Oil



Lot 353
Chinese
famille rose
lidded jar



Lot 355
Tall Ivory
Carving

CATALOGUES \$12

A 15% percent buyers premium applies to this auction
plus G.S.T. on premium = all up 17.25%
Catalogue also online at www.cordys.co.nz.

JOHN CORDY LIMITED

FINE ART AUCTIONEERS AND APPRAISERS

180 Great South Road, Remuera, Auckland 1051, New Zealand

P.O. Box 74071 Greenlane Phone (09)523-1049

Email info@cordys.co.nz Website www.cordys.co.nz



The Catalogue

The figures given along side each lot are guide prices only.
Measurements throughout are given in millimetres width x depth x height.
This auction includes some entries from vendors "In Trade".

TUESDAY 17TH OCTOBER 2017

1ST SESSION AT 9.30AM

— THE SLATER COLLECTION —

1
Two Luke Adams pottery pieces, an uncommon blue glaze apple money box, height 80 and a pine cone wall vase, glazed interior, height 185. \$120

2
Two Luke Adams green glaze items, squat baluster vase, height 113 and a circular dish, diameter 145. \$90

3
Two Luke Adams jugs, brown Rockingham-type glaze, one barrel formed, height 145. The other smaller relief moulded with dogs etc, height 75. \$90

4
Two Luke Adams pottery pieces, an ovoid vase in speckled brown glaze and small jug, both with similar relief moulded decoration. \$90

5
Luke Adams mushroom form vase, the wide form rim with fine concentric bands, tan glaze, printed mark to base. Diameter 210. \$80

6
P. Hutson & Co. hunting jug, brown glaze and relief decoration including dog form handle, impressed mark. Height 185. \$140

7
P. Hutson & Co. brown glaze barrel, two encircling bands of fine angular ribs, impressed mark. Height 260. \$150

8
Two P. Hutson & Co. pottery items, a small majolica glazed barrel and small open mouth crock, both with impressed with mark. Heights 180 and 135. \$110

9
A rare Peter Hutson & Co. pottery commemorative Boer War jug (1899-1902), in pale/clear glaze with mild blue to the recesses, relief decoration of a soldier with a bandolier and rifle standing to attention, crossed flags and the words 'Whawhai Mo To Kanga Mo To Kuini Ake Ake Ake' (Fight For Your Queen Forever), the handle modelled as a cannon, impressed potter's monogram and 'Rd 123'. Height 210, professional restoration to spout and top rim. Note: Hutson's eldest son served in the South African campaign with New Zealand's Second Contingent. See page 5. \$1,000

10
A large Peter Hutson & Co. four-gallon storage pot, lustrous brown glaze, an encircling band of fine diamond and coggle decoration, impressed marks, chipping to the angular everted top lip. Diameter 375. \$200

11
Peter Hutson & Co. green glaze vase, waisted cylindrical form with three scrolling handles, lustrous finish, impressed potter's mark to base. Height 150. See page 5. \$200

12
Peter Hutson & Co. circular bowl, inverted rim, lustrous green glaze, two scrolling handles, one restored, impressed mark to base. Diameter 200. \$180

13
P. Hutson & Co. red glazed bottle vase, handle broken and absent, impressed mark. Height 160. \$80

14
Peter Hutson N.Z. colonial green glazed pottery vase, compressed wide ovoid form with two looping handles, impressed coggle type decoration to top rim, lustrous finish, impressed potter's monogram to base. Height 170. See page 5. \$450

14A
P. Hutson & Co. ginger beer bottle, brown glaze top, impressed logo with crossed keys and 'G.W. Brodie Wellington' and with maker's mark. Height 170. See page 5. \$120

15
N.Z. colonial William Neighbours large vase, baluster form, the near clear salt glaze over the agate ware body, relief press moulded design of floral sprigs, stiff leaf design to both rims, The Neighbours & Sons, Waimangaroa Pipeworks was based in Westport, established in 1893 primarily produced bricks and pipes but did produce a small number of domestic hand potted and press moulded examples of which this is a major find. Height 458. See page 5. \$500

16
Amalgamated Brick & Pipe Co. Ltd (Taranaki St. Works, Wellington) solid agate ware pedestal urn, the deep terracotta body with pale tan inclusions, the wide compressed bowl on a flared pedestal, large impressed mark to base. Minor damage. Diameter 290, height 250. See page 5. \$150

17
Amalgamated Brick & Pipe Co. Ltd solid agate ware baluster vase, slip cast, similar to above, impressed mark. Height 285. See page 5. \$150

18
Two Temuka Ware pots, the tall coffee pot with mottled brown glaze, hexagonal form, height 215. The octagonal teapot in tan glaze, impressed mark. \$150

19
Temuka Ware blue glazed tobacco humidor, compressed ovoid form, the domed lid with chromed metal locking fittings, impressed mark to base. Height 195. See page 5. \$180

20
Temuka Pottery lidded Maori design tobacco jar, the lid as a bust of a Maori Warrior, stylised full figures and masks to the body, relief spiral 'carved' and other designs to the swollen base, brown glaze, impressed maker's details to base, small flake chip to lid. Height 280. See page 5. \$650

21
Two Temuka Ware electric jugs, one green with lobed paneled sides, plastic 'Neeco' lid, impressed mark. The other blue, hexagonal form, conforming lid final, impressed marks. \$200

22
Timaru Potteries large lidded ovoid storage pot, teal blue glaze, printed mark to the interior shoulder, hair crack to base. Height 375. \$110

23
A Crown Lynn white McAlpine refrigerator jug, ribbed tall rectangular section form with 'McAlpine' in blue highlighted relief to each side. Height 225. See page 5. \$150

24
An uncommon Crown Lynn teal blue McAlpine/Prestcold refrigerator jug, ribbed tall rectangular section form with 'McAlpine' and 'Prestcold' in relief to either side. Height 225. Crack to one side. See page 5. \$200

25
An uncommon Crown Lynn lemon yellow refrigerator jug, ribbed tall rectangular section form with 'McAlpine' and 'Prestcold' in relief to either side. Height 225. See page 5. \$400

26
A vintage Crown Lynn lemon yellow McAlpine refrigerator jug, ribbed tall rectangular section form with 'McAlpine' in relief to each side. Height 225. See page 5. \$250

27
An uncommon Crown Lynn dark blue McAlpine refrigerator jug, ribbed tall rectangular section form with 'McAlpine' in relief to each side. Height 225. See page 5. \$1,200

28
A vintage Crown Lynn mint green McAlpine refrigerator jug, ribbed tall rectangular section form with 'McAlpine' in relief to each side. Height 225. See page 5. \$300

29
A vintage Crown Lynn green glazed McAlpine refrigerator jug, ribbed tall rectangular section form with 'McAlpine' in relief to each side. Height 225. See page 5. \$300

30
An uncommon Crown Lynn McAlpine refrigerator water dispenser, white with light blue lettering, flat

oblong section with silver plated tap.
See page 5. \$250

31
McAlpine white glazed ashtray. \$60

32
Ambrico yellow/tan glazed lidded electric jug, ovoid form, impressed mark to base. Height 200. See page 5. \$120

33
Ambrico pale yellow glazed electric jug, lidded, fluted body, impressed marks to base. Height 210. \$120

34
Ambrico yellow glazed electric jug, ovoid body, concentric rings to the top rim and base, impressed marks. Height 210. See page 5. \$120

35
Two Crown Lynn white lidded refrigerator jugs, Kelvinator' and 'Leonard' in gold highlighted relief to each side, stamp to base, some staining. Height 230. \$120

36
Two early Crown Lynn vases, similar blue/purple over mottled tan glaze, printed tiki mark to the taller, shape #87 to the other. Heights 135 and 115. \$80

37
An early Crown Lynn cereal bowl as made for the American troops, thick walled, green glaze with streaked brown highlights. Diameter 158. See page 5. \$120

38
Two early Crown Lynn shaving mugs, green and tan glazes, printed mark to one, the other with incised numbers. \$70

39
Three early Crown Lynn items, a pair of salt and pepper and similar lidded mustard pot. \$50

40
Early Crown Lynn Art Deco ovoid vase, the stepped circular base with stepped bracket-type supports, the green glaze with streaked brown highlights, small brown printed circular mark to base. Height 215. \$150

41
Three early Crown Lynn squat spherical vases, various glazes. \$90

42
Three early Crown Lynn vases, the largest in dark blue glaze with early printed small circular number. Height 143. \$100

43
Three Crown Lynn items, includes a pair of salt and pepper and an unusual, brown glaze fuse. \$50

44
Two early Crown Lynn small monkey dishes, pale green and pale red glaze. Lengths 70. See page 5. \$60

45
Three early Crown Lynn vases, various mottled brown glazes, the largest height 175, shape #59 and with fractional number. \$90

46
Two early Crown Lynn jugs, one with stepped banded design in pale blue glaze, the other green with brushed brown highlights to the shoulder, small circular printed brown mark to base of each. Heights 130 and 120. \$100

47
Crown Lynn ribbed ovoid vase, mottled blue and tan glaze, tiki mark printed to base. Height 140. \$60

48
An early Crown Lynn bulbous vase, mottled brown and tan glaze, impressed #67 to base. Height 200. \$90

49
A pair of early Crown Lynn stylised polar bear bookends, green glaze, printed mark and incised fractional number to base. Height 100. See page 5. \$200

50
Stylised Mickey Mouse jug, green glaze, incised fractional number to base. Height 112. See page 5. \$300

51
An early Crown Lynn lion sculpture, green glaze. Length 145. See page 5. \$200

52
An early Crown Lynn elephant sculpture, mottled tan and pale glaze, the back leg re-stuck. Length 140. \$40

53
An early Crown Lynn stylised hare sculpture, mottled green and tan glaze, incised fractional number to base. Length 120. See page 5. \$120

54
An early Crown Lynn Scottie Dog sculpture, blue glaze, incised fractional numbers to base. Length 120. See page 5. \$120

55
An early Crown Lynn kiwi spill vase sculpture, mottled red, brown and pale glaze, incised fractional number to base. Length 130. See page 5. \$120

56
Crown Lynn sculpture of a seated dog, grey and black glaze, the extended tongue in red, tiki mark to base. Height 180. \$100

57
Crown Lynn black glazed dog sculpture, Height 135. \$80

58
Crown Lynn recumbent goat sculpture, variable brown glaze, impressed number illegible. Length 130. \$60

59
Crown Lynn sculpture of two Setter dogs, impressed number 172. Length 112. \$80

60
Three Crown Lynn white glaze dog models, includes seated Scottie dog, Bulldog and two English Setters. See page 5. \$110

61
Crown Lynn Wharetana Maori Art Pottery Hei Tiki ashtray, the stylised head in

brown glaze, the open mouth in green. Impressed shape # 1014 to base. Recorded in the original Wharetana catalogue as 'Pleasant by contrast to the more heavily carved specimens'. 105 x 140 x 30. See page 5. \$400

62
Crown Lynn Wharetana Maori Art Pottery trinket box, in the #1002 Rau-ponga Pattern with brown glaze and stylised mask decoration, the lid centre detailed 'And Appreciation from George Harrison & Co. Ltd, The Quality Men's Outfitters, Wellington, N.Z. (21st Anniversary)'. Impressed number and paper label to base. 135 x 90 x 60. See page 5. \$650

63
Crown Lynn Wharetana Maori Art Pottery wall 'plaque', Model #1021 with a spiral centre in green glaze, framed by the outer border with taniwhas and masks in brown glaze. Impressed number to reverse, two original holes for suspension to the ring foot. Diameter 254. See page 5. \$650

64
A pair of Crown Lynn Wharetana Maori Art 'Moko' book-ends, Model #1019 recorded as Ceremonial Life-Sized wooden masks... The face moko (tattoo) is typical of a Maori chief or tohunga...', striking dark green glaze, impressed number to base of each. 100 x 100 x 145. See page 5. \$1,200

65
A pair of Crown Lynn Wharetana Maori Art Pottery 'Tiki' book-ends, Model #1020 and recorded as 'Taken from the Recumbent Tiki Usually found on the Tau Rapa (carved stern post of canoe)'. Green glaze with partial brown glazing to the base and supporting post, impressed mark and silver foil label to each. 75 x 135 x 145. Small grind mark to foot edge of one. See front cover and page 5. \$1,200

66
Crown Lynn Wharetana Maori Art Pottery wall plaque, circular form, dominated with a large green glazed hei tiki form on lineal, notch and spiral 'carved' background. Curved back edge, impressed with a number. Diameter 255. See page 5. \$1,000

67
Crown Lynn Wharetana Ware Whare ashtray, Maori carved type decoration in brown glaze, green centre, impressed shape number #1015 to reverse. 140 x 118. See page 5. \$300

68
Crown Lynn Hand Potted tall baluster vase, matt white glaze, printed tiki mark and incised number 110. Height 265. See page 8. \$500

69
Crown Lynn Hand Potted rare pale pink glazed vase, ovoid form with two bulbous rings to the tapered neck, printed mark to base. Height 165. See page 8. \$280

- 70**
Crown Lynn Hand Potted medium size vase, plain squat spherical form with ring neck and foot, the base incised with shape #9 and printed mark. Height 145. See page 8. \$280
- 71**
Crown Lynn Hand-Potted ovoid vase, incised shape #13, matt white glaze, medium size. Height 175. See page 8. \$220
- 72**
Crown Lynn 'Hand Potted' white glaze vase, baluster form with three bands of fine concentric rings, matt finish, printed underglaze mark in blue and incised 'Hand Thrown'. Height 300. See page 8. \$300
- 73**
Crown Lynn Hand Crafted baluster vase, decorated with a yellow magnolia, printed mark. Height 215. See page 8. \$220
- 74**
Crown Lynn Bohemian Ware vase, designed by Mirek Smisek, tapered beaker form with incised abstract 'crazy paving' type design, traditional matt dark brown glaze with incised pale base showing. Incised marks to base. Hair crack to rim. Height 130. See page 8. \$200
- 75**
Crown Lynn Frank Carpay dish, rounded rectangular form with fluted rim, green abstract decoration to the well, painted 'WERK', printed and incised marks. 160 x 110. See page 8. \$140
- 76**
Two Crown Lynn Frank Carpay small square dishes, circular coloured decoration to each, printed mark and incised number 456 to each. 97 x 97. \$120
- 77**
Crown Lynn Wharetana Ware circular ashtray, the exterior with relief stylised Maori figure type decoration, triangular centre top. Printed mark including 'With the Compliments of Crown Lynn' and impressed shape #1017. Diameter 120. \$180
- 78**
Crown Lynn naked woman figural lamp base, she leans upon a rocky outcrop, no fittings present, printed mark to base, matt white glaze. Height 245. See page 8. \$300
- 79**
Crown Lynn Arthur Rhodes terracotta vase, glazed, textured and matt banded decoration, printed tiki mark, small rubs to rim. Height 240. \$160
- 80**
Crown Lynn Hand-Thrown terracotta vase by Arthur Rhodes, textured finish, high gloss and matte glaze sections, printed tiki mark. Height 225. See page 8. \$160
- 81**
A small Crown Lynn Arthur Rhodes vase, similar to above. Height 97. \$60
- 82**
Two Crown Lynn ginger jars, relief blossom decoration, one blue the other mint green. Heights 115 and 110, both without lids. \$90
- 83**
Three Crown Lynn lidded ginger jars, two red and one green, each with printed mark. Heights 115 ea. \$110
- 84**
Two Crown Lynn white glaze vases, includes; shape #.478. with relief stylised fish and sea decoration and shape #.448. with stylised florals. Heights 143 and 155. \$90
- 85**
Three Crown Lynn white glaze vases, shapes #88, 62 and 617. Heights 134, 120 and 155. \$90
- 86**
Three Crown Lynn white glaze vases, includes shapes #603, 618 and 136. Heights 165, 155 and 145. \$100
- 87**
Two Crown Lynn white glaze vases, includes shapes #598 and 476. Heights 156 and 95. \$90
- 88**
Crown Lynn trough form vase, relief stylised leaf design, printed mark and incised number 609. Length 285. \$90
- 89**
Crown Lynn large lustre glazed swan, white with green lustre highlights to the base, impressed shape #170. Length 310. See page 8. \$300
- 90**
Crown Lynn double nautilus lustre glaze vase, wide flaring trough form, white lustre top, green lustre base. Impressed shape #.500. Length 295. \$120
- 91**
Crown Lynn Seppelts liqueur bottle, burgundy glaze, printed mark to base. Height 270. See page 8. \$350
- 92**
Crown Lynn Seppelts liqueur bottle, printed tiki mark, gloss white glaze. Height 255. See page 8. \$300
- 93**
Crown Lynn model of the hippopotamus 'Khama', shape #207, flake chip to base, 'KHAMA' in relief to base. Length 165. \$80
- 94**
Crown Lynn Hand Potted vase, green glaze with white dot repeating triangles to the shoulder, incised makers' marks and 'No. 1' and printed mark. Height 137. See page 8. \$120
- 95**
Crown Lynn vase similar to above, \$120
- 96**
Titian Studio Maori mask ashtray, carved type decoration, green glaze, incised marks to reverse. Length 120. See page 8. \$100
- 97**
Titian Studio 'Wahine' character jug, glazed in colours, silver label attached, impressed marks. Height 125. See page 8. \$120
- 98**
Titian Studio 'Wahine' character jug, brown glaze, impressed marks. Height 120. See page 8. \$120
- 99**
Titian Studio leaping trout model, brown glaze back, yellow to the head area and green base, impressed marks. Height 165. See page 8. \$120
- 100**
Titian Studio leaping trout model similar to above, darker glazes. Height 170. \$120
- 101**
Titian Studio leaping trout model, a different model to the above. Height 120. \$100
- 102**
Titian Studio Pottery purple lustre specimen vase, ovoid body, restrained relief decoration. Height 245. \$120
- 103**
T. N. Lovatt brown glaze vase, stylised Maori decoration in relief. Height 105. See page 8. \$80
- 104**
Jova Rancich majolica glazed vase, ovoid form, lustrous streaks of green, brown and blue glaze, impressed potter's marks to base, restoration to rim. Height 175. See page 8. \$120
- 106**
Two Briar Gardner Maori decorated small circular dishes, both with incised repeating Maori carved type design to the inverted rims, one brown, incised signature and date 15/5/37. The other green, incised initials and date 3/4/38 to base. Diameters 100 and 65. See page 8. \$140
- 107**
A small Briar Gardner Maori decorated vase, squat baluster form, incised Maori designs to the shoulder, incised signature and date to base 30/7/36? Height 55. See page 8. \$90
- 108**
Two Briar Gardner vases, one of short trumpet form with everted rim, ribbed body, incised signature and date 25/1/44. The other squat vase with mottled dark glaze, incised signature. Diameters 125 and 110. \$120
- 109**
Briar Gardner ovoid vase, inverted rim, tan and yellow mottled glaze, incised signature and date 1/1/41. Height 120. See page 8. \$110
- 110**
A large Briar Gardner vase, squat circular base with tall wide cylindrical neck, lustrous mottled green glaze, incised signature and date 5/6/38 to base. Height 270. See page 8. \$250
- 111**
Two Elizabeth Lissaman pottery pieces, the waisted vase with code dating for 1987, the preserve pot with spoon slot code dated for 1982. \$100
- 112**
Two Elizabeth Lissaman pottery pieces, the bowl with four coloured glazed stylised birds to the exterior rim, date coded for 1987. Diameter 133. The



9



11



14



14A



15



16



17



19



20



23



24



25



26



27



28



29



30



32



34



37



44



49



50



51



53



54



55



60



61



62



63



64



65



66



67

wall plaque with large stylised bird in coloured glaze, date coded to the reverse for 1987. Diameter 240. See page 8. \$220

113

O.C. Stephens pedestal urn vase, vertical lobed exterior in deep red glaze, bright green interior, printed mark to base. Height 137. See page 8. \$120

114

O.C. Stephens large clam shell bowl, yellow glazed interior, pale green/grey exterior, printed mark to base. Length 295, flake chip to rim. See page 8. \$150

115

Two O.C. Stephens green glaze bowls, one lozenge hexagonal form, the other square with angular ribbed ends, both marked. Lengths 195 and 100, small glaze rubs to corner of box. \$110

116

Two O.C. Stephens pottery items, a squat ovoid vase with incised decoration to the shoulder. The other a rectangular lidded box, lustrous pale blue glaze to both, printed mark to each. The vase diameter 115, the box length 115. See page 8. \$120

117

O.C. Stephens leaf form bowl, pale green glaze, printed mark. Length 190. \$90

118

O.C. Stephens Art Deco bright green glaze vase, the squat body with relief scrolling leaf restrained decoration, printed mark. Diameter 160. See page 8. \$150

119

Three O.C. Stephens items, an ovoid vase with stylised green floral designs on tan, with lustre overglaze, a small teal blue squat vase and a bright green and white bowl, each with printed mark. \$100

120

Four Temuka Ware pottery pieces, includes; an Art Deco mottled blue glaze vase, a squat Art Deco lidded green glaze storage jar and two flared vases. \$220

121

Three Crown Lynn trumpet form vases, brown, mint green and blue glazes. Heights 270 and two 165, impressed and printed marks. \$140

MISCELLANEOUS

122

An old Dinah cast-iron mechanical bank, made by John Harper Co., England, c.1911. Missing baseplate. See page 13. \$120

123

An old Little Joe cast iron mechanical bank, made by John Harper Co., England, c.1910. Original baseplate intact. \$100

124

A Victorian cast iron Trick Dog bank, made by Shepard Hardware Co.,

Buffalo, New York, c.1888. Key lock trap missing. Ex. Bryan Jackson's Museum. \$200

125

A rare 1930s Schuco #5000 Radio Maybach tinplate wind-up car in original box, in good working order, antenna to top, operational lever in front window, music box working, original deep cream crimson and cream colourway, rubber tyres intact, maker's lithographic details printed to base, key intact, with extra original Schuco key, complete with original box, no lid and printed pamphlet. See page 13. \$800

126

A 'Mamod Steam Tractor', in original box, black, green, red and cream paint finish, with spare belts. Length 260. \$200

127

A Mamod 'Marine Steam Engine' in original box, with box of solid fuel tablets, instruction pamphlet etc., all in good condition. \$150

128

A vintage 1930s 'Electric Speedway' dynamo activated board game (roulette), by B.G.L., London, a turntable set with eight motorcycle lead models activating coloured indicator light bulbs. 500 x 300. \$300

129

A cast iron 'Punch' door-stop, traditionally modelled seated with a tall curved hat and dog to his side. Height 300, rust evident. \$140

130

A c.1895 skeleton 'Deluxe Model' desktop telephone, cream painted finish, plastic fittings, converted by Ericsson to link into the 'Modern Phone System', various brass fittings, handle to top cradle, crank handle to side, dial to front. See page 13. \$650

131

N.Z. proof HEITIKI \$1 proof silver coin, in limited edition carved rimu case, this special edition of 200 only including the First Day Cover, this coin with heitiki based on the carving by Charles (Rapioni) Wilson, including three signatures to the cover, etc. Note: 130 of this 200 edition is held in tribal ownership. \$360

132

A 1935 N.Z. 3d. coin, \$180

133

A 1935 N.Z. 3d. coin, \$180

134

Four volumes, 'Alpine Plants Painted from Nature by A.W. Bennett', published London c.1885. \$200

135

A 1960s 'Air France' promotion travel poster, 'Grand Bretagne', lithograph in colours, linen backed. 860 x 580. \$220

136

Hardcover copy of Picasso 347, volumes I and II, with slipcase, the books with gilt page edges, published by Random House / Maecenas Press, 1970. The two volumes in very good

condition, the slipcase with some wear. \$500

137

A book 'French Scenery from Drawings Made in 1819 by Captain Batty of the Grenadier Guards', first edition 1822, containing 64 fine engraved plates by Heath and Wallis; along with 'Select Views of some of the Principal Cities of Europe' by the same. \$300

138

A set of four coloured illustrations from childrens books, published 1887, framed and glazed. \$200

139

Two 19thC French steel engravings, 'Accompagnement du Luth' and 'La Leçon de Musique'. Each 320 x 235. \$300

140

Two lithographs - 'Napoleon III' and 'Lord Raglan', the former without colour, 690 x 450; the latter hand coloured, 310 x 255. \$150

141

A Victorian full-length silhouette of a woman, painted in black and gilt, fruitwood frame. Overall 380 x 260. \$100

142

Three double page maps of Oceania: L'Océanie (Andriveau-Goujon Paris 1832); Oceania (A.K.Johnston London c.1861) and Islands in the Pacific Ocean (A.K.Johnston London c.1844). \$200

143

Eight various 20thC New Zealand maps, mounted and unmounted. \$100

144

A set of four Indian Mughul paintings, depicting various flowers and butterflies, each leaf with Hindi surtitle and subtitles. Random glazed. Each 210 x 120. \$200

145

A 19thC Indian miniature painting, depicting Shah Jahan and Mumtaz Mahal, the emperor and consort on horseback caught in a thunderstorm returning from a hunt. In inks, watercolours and gilding. The framed work glazed verso displaying a biographical manuscript note in English. 200 x 140. \$400

146

An Indian miniature painting, a portrait of Pratap Singh depicted standing holding a tulwar. In inks, watercolours and gilding, the frame indistinctly inscribed. 235 x 165. \$250

147

Five Indian miniature paintings, depicting allegorical scenes, painted in watercolours and inks, some with subtitles and surtitles. Each approximately 225 x 145. \$500

148

A Georgian period needlework sewing case, with gilt catch and original interior, distressed. Width 115, with letter of provenance reputed the case to have belonged to King George IV's governess. \$120

- 149**
A Victorian mother-of-pearl card case, Length 100. \$80
- 150**
Three old paper knives, one Japanese with shibiyama handle, one brass with a Pierrot handle, the other Mauchline Ware. \$100
- 151**
A 19thC mahogany jewellery casket, with satinwood clashed edges, ring handles, a tray-fitted interior. 235 x 205 x 110. \$110
- 152**
A fine small Oriental and lacquer and brass box to hold playing cards, the hinged lid opening to reveal compartments for four packs of cards. 140 x 100 x 120. \$200
- 153**
A Bilston-style enamel patch box, with a pair of Georgian paste and gold wire monogrammed plaited hair back cuff-links, or breeches buttons. The patch box inscribed 'A Mother's Gift to a Deserving Child'. Some faults. Along with a gilt metal and enamel box. \$200
- 154**
A Victorian walnut jewellery box, the top and front inlaid with a square scroll border pattern, mother-of-pearl shield to the lid and keyhole escutcheon. 300 x 220 x 130. \$175
- 155**
Three miniature carved wood standing bears, \$100
- 156**
A Black Forest carved decanter stand, c.1900, carved as a bear carrying a tree-trunk section on his back, the tree supports a small decanter and six glasses hang from protruding branches. Height 410. See page 13. \$425
- 157**
A bronze statuette, in the antique manner, of a cherub seated holding a scarf, raised on a porphyry marble plinth. Height 410. \$250
- 158**
An old church hand bell, the bronze bell cast and pierced in relief with biblical figures and names of the first four books of the New Testament. On wooden handle. Height 270. \$125
- 159**
An Edwardian oak-cased perpetual calendar. Height 170. \$120
- 160**
A vintage leather photo frame holding a signed photograph of King George VI and Queen Elizabeth II, the royal monogram to top of frame. 70 x 260. \$120
- 161**
An early 1900s Rimmel perfume bottle, in original Art Nouveau box, the bottle still sealed and with original contents. \$80
- 162**
A pair of vintage French altar candlesticks, on round turned base with black and gold paint finish. Height 940. \$150
- 163**
A Victorian copper kettle, fixed handle. 200 x 130. \$120
- 164**
A Victorian copper coal scuttle, swing handle and studded detail. 440 x 240. \$150
- 165**
A large vintage 'Ocean City' big game fishing reel and matching rod, maker's plaque inset to the reel side, star drag, lever wind. Length 2080. See page 13. \$450
- 166**
A c.1955 big game fishing rod and reel, the rod custom made by Williamson S. Sports, Whangarei, the reel with star drag and original braid. Length 2100. See page 13. \$350
- 167**
A 1939 'The Weekly News' issue No. 3817, featuring 'Deep-Sea Fishing'. \$70
- 168**
Four c.1960 vintage black and white photos taken by Tudor Collins Studio, Warkworth, big game fishing subjects, large format. 300 x 375. \$90
- 169**
Various vintage printed big game fishing material, includes: The Auckland Weekly News, March 26, 1925, featuring big game fishing, eight full page copies of the weekly news game fishing articles and a press story about Francis Arlidge, owner of the Alma G. and his association with Zane Grey. See page 13. \$100
- 170**
Four vintage big game fishing photos, including Lord and Lady Louise Mountbatten 1957, each photo detailed by hand on reverse in ink and with photographer's stamp for T.W. Collins of Warkworth, includes 'Lady Louise Washes Down', Fishing Cape Brett, Easter 1956, etc. \$160
- 171**
A c.1955 leather big game fishing harness. \$100
- 172**
A Hardy's leather trimmed fishing bag, c.1990. \$75
- 173**
G. Little & Co. 4" reel, engraved: 'Makers to H.R.H Prince of Wales', ebonite rims and back plate, brass face plate with horn handle, c.1870. See page 13. \$350
- 174**
Eatons 'Sun' patent Nottingham reel, with brass star-back and twin horn handles, made for Wisemans, Queen St, Auckland. (sticker to reel back), c.1910. With original line. See page 13. \$400
- 175**
A wicker fishing creel, in good condition, c.1940. \$90
- 176**
A retail display of wet flies, made for Kilwell, Rotorua, c.1970. \$90
- 177**
A presentation antique salmon fly box, with Hawkes Bay presentation label to the interior dated 1904, restored by Les Matheson, holding approximately 61 good salmon flies. \$350
- 178**
An uncommon copy of the Hardy's Anglers Guide, 54th edition, 1934, good used condition. \$150
- 179**
A rare copy of a W.H.Tisdalls Fishing Catalogue, c.1937 \$150
- 180**
Three trout fishing catalogues, for Tisdalls, c.1955, McCarthys, c.1940 and R. Sanderson, c.1950. \$100
- 181**
A Dept. of Internal Affairs booklet - New Zealand, the Angler's Paradise', signed inside by Keith Draper, Taupo', c.1950. \$50
- 182**
A Dept. of Internal Affairs booklet - Official Handbook of Trout Fishing in New Zealand Thermal Area', signed inside by Keith Draper, Taupo, c.1935. \$50
- 183**
'Guide to New Zealand. The most wonderful Scenic Paradise in the World. The Home of the Maori.', compiled by C.N. Baeyertz, published Dunedin 1903. Spine repaired. \$50
- 184**
'The New Zealand Fishing & Shooting Gazette', first issue, Vol. 1, No.1, November 1927. \$140
- 185**
An E.J. Brown 3 5/8" trout reel, a copy of the Hardy 'Perfect', in unused excellent condition, c.1950. \$150
- 186**
A Hardy 'Silex' 4 1/2" No.2 reel, ivorine handle, brass rim regulator screw, smooth alloy foot. The rim cut out with ivorine brake on rim, one handle on face removed repaired. Tisdalls nickel silver name-plate on back. c.1922. See page 13. \$300
- 187**
Olman's 'Guide to Golf Antiques', along with Sotheby's Christie's and Phillips golfing catalogues. \$50
- 188**
Four vintage hickory shafted golf clubs, right-handed, includes R. Forgan & Co., Scotia, Cochrane & Co., Mashe Niblick, etc. \$140
- 189**
An old leather golf bag with six hickory shafted clubs, includes a brass headed putter, two woods, two Royal Crown brand irons, etc. See page 13. \$200
- 190**
An old canvas and leather stitched trim golf bag with a collection of six hickory shafted clubs, includes two woods, two putters and two irons, all with detailed labels attached. \$200
- 191**
An old ship's binnacle compass, the gimbal mounted compass housed beneath a domed brass housing with glazed viewing portal, raised on a



teak cylindrical support cabinet from a timber plinth base, complete with steel navigation balls mounted to either side. Height 1570. \$1,500

192

An early 20thC amber and silver cigarette holder, original leather case. Birmingham 1911. \$110

193

A good taxidermied Sambar deer head, the antlers of 6 points, the pelt in excellent condition. \$1,400

194

A quality taxidermy deer head, the antlers of 13 points. See page 13. \$400

195

A graduated set of four clam shells, the largest 450 wide. \$250

196

A graduated set of six Continental pewter measures, cylindrical with square handles. Tallest 180. \$150

197

A cast iron model of a recumbent bull, with bronze patination. Length 600. \$100

198

A cast steel statuette of a galloping horse, with bronze patination. Length 630. \$100

MILITARIA

199

An Afghanistan ritual bronze dagger, the blade with decorative silver and copper inlay, the handle with double lion's head and double goat's head highlights to the pommel and blade mount. Length 560. \$400

200

A Javanese kris with straight blade, palm-wood scabbard, simple pommel with metal banding and cord binding to the hilt. Overall length 180. \$100

201

A German model 1898 bayonet and scabbard, some faults, metal work and wood work varnished. Overall length 520. \$100

202

British Pattern 1879 artillery saw-back bayonet, the guard removed, the 20" blade double edged towards the point, with scabbard. \$150

203

A British Army Veterinary Corp. officer's sword and scabbard, etched blade marked 'Timewell, Sackville St., London', at the ricasso, the pierced brass guard with crown cipher, sharkskin and wire bound grip, attached associated ribbon and potapee. Overall length 980. \$750

204

A Victorian officer's sword, marked 'Dawsons, Dublin' at the ricasso, the brass guard with crowned Victorian cypher, sharkskin bound grip (wire absent). Overall length 935. \$650

205

Four turn-of-the-century chromolitho-

graphs of Scottish military officers in uniform. Each 225 x 175. \$150

206

A.C. Robertson, oil on canvas, Desert Scout, signed and dated, inscribed verso 'A New Zealander on Patrol Scans the Western Desert', the soldier depicted being Clarence Henry Hawtin. \$180

207

An Air Force great coat belt mounted with badges and buttons, with over 40 various cap, shoulder and collar badges and buttons of various Allied Forces. See page 13. \$150

208

A chromed brass model of an Airspeed Oxford training bomber with dorsal turret, mounted on a propeller boss set with an aneroid barometer and further raised on a section of propeller blade. Height 330. See page 13. \$1,600

209

WWI Turkish model 1887 long bayonet in scabbard, hooked quillon, leather scabbard and frog. Length 680. \$150

209A

A vintage Fairbairn Sykes style Commando stiletto knife in scabbard, the shaft double edge blade tapering to a point. Knife length 305. See page 13. \$200

210

French pattern 1831 Chatellerault infantry 'gladius' sword. Brass hilt, armoury marks at ricasso. Length 710. \$350

211

French pattern 1831 Chatellerault infantry 'gladius' sword. Brass hilt, armoury marks at ricasso. Length 710. \$300

212

An impressive vintage military collection on display board, WWI and WWII items, many New Zealand, includes WWI three medal group to 12/115 Pte. F.Gordon N.Z.E.F., badges, buttons, insignia, grenade etc. 2110 x 920. See page 13. \$1,100

— ARTEFACTS, TRIBAL & NZ — HISTORICAL

213

An old Solomon Islands cross, ebonised and ornately inlaid with cut sections of mother-of-pearl, the flare sided stand with a stepped front. Height 370 \$120

214

A 19thC Asmat (Papua New Guinea) drum, carved wood, traditional hour-glass form, notch inside banded detail with remains of white and blue pigment, a figure in relief to the centre and base, an opposing butterfly in relief, original darkened finish, the handle showing wear, old lizard skin cover. Height 618. See page 13. \$450

215

An old Asmat (Papua New Guinea) carved wood drum, similar and plainer as above. Height 635. \$300

216

A Pitcairn Island carved wood flying fish, made by Thornton Christian, on typical slender column stand. Length 380. \$220

217

An early 19thC Sandwich Islands (Hawaiian) canoe model, the wooden single hull with small adze/chisel markings and remnants of decorative painted designs. The terracotta brown, white and blue painted design to the prow and stern includes a spiralling serpent type form. An old paper label affixed to the base, handwritten in ink: 'Model of Canoe - Sandwich Isla...'. Length 755. See page 13. \$450

218

A large old African ivory tusk section bangle, wide form, discolouration consistent with age. 258gms. Diameter 105. \$150

219

A small solid carved ivory bust of an African woman. Height 120. \$200

220

Two Bishop John Coleridge Patteson (1827-71) historical items, an engraving within a leather glazed case and a blotter drawn in ink with a schooner and a memorial detailed to the outside 'Made out of a tree growing at Nukapu, close by Bishop Patteson's Memorial Cross'. Note: This and lots 213, 214, 215 & 221 are from the same vendor. \$80

221

Bishop John Coleridge Patteson's personal copy of the rare 'Stanford's map of Australasia', London: Edward Stanford, 1859. First edition. Steel engraved map with hand colouring, total 1550 x 1740 mm, dissected into 48 sections, laid onto linen edged with blue silk, folding to 255 x 215 mm, within original embossed brown morocco boards with gilt lettering and ornament (rubbed, surface tears, spine frayed at head and tail), engraved by W. & A.K. Johnston, Edinburgh, a near fine example of this truly monumental map (scale ca. 1:4 200 000), the original colouring still strong and vibrant and with some hand annotation in pencil around the 'Salomon Islands' group. The interior cover inscribed in ink 'Bishop Patterson from T. Mort Esq. Good wishes April 1864'. Wikipedia records Patterson as; 'A missionary to the South Seas from 1855, Patteson became an accomplished linguist, learning 23 of the islands' more than 1,000 languages. In 1861, he was selected as the first Bishop of Melanesia. Patteson was killed by natives on Nukapu, in the Solomon Islands.' See page 13. \$3,500

222

A silver cake fork and jam spoon, with finely engraved decoration and N.Z. greenstone handles. Birmingham 1910. Length 130. \$150

223

A pounamu hei tiki by Mike Higgs,

Kokopu variety, paua shell inlaid eyes. Height 100. \$250

224

A greenstone ear pendant, the kapeu of traditional hockey stick form, with suspension hole to the top. Length 100. See page 13. \$220

225

A well carved N.Z Kokopu greenstone model of a leaping 'Kokopu (speckled trout), curved back, inset eyes, mounted on a wave and pool form base. Note: Kokopu being both the name for the spotted N.Z. greenstone and N.Z. native trout. Height 90. See page 13. \$400

226

A vintage Maori carved walking stick, the handle as a clenched fist, the shaft entirely carved with stylised figures, lizard (tuatara) form, scrolling designs, etc., dark brown stain finish. Length 965. \$350

227

A 19thC album 'New Zealand Ferns', the cover boards of mottled kauri, carved with ferns and title, tooled green leather spine, marbled endpapers labelled 'Prepared and Mounted By T. Cranwell, Parnell, Auckland, N.Z.', the pages with dried ferns (many loose) and printed botanical names. 280 x 220. See page 13. \$300

227A

A 19thC Maori carved stylised mask, notch, lineal and scrolling detail, the open mouth with white painted teeth to the top, open section below, the mouth reputedly as a geothermal water spout cover, old red paint, crack evident. 280 x 65 x 370. Registered Y18348. See page 16. \$550

228

A c.1900 pair of taxidermy kiwi with egg, the adult birds with pale plumage, displayed in a winter setting within a kauri framed glazed case, a single egg included, old labels attached. The case measuring 660 x 350 x 585. See page 13. \$3,000

229

A New Zealand timber folk art jewellery box, carved in low relief to the lid and walls with huia birds and kowhai, named 'Valerie' to the lid, the interior with blue velvet lining and removable tray. 300 x 220 x 170. See page 13. \$450

230

A N.Z. Jane Brenkley carved and painted rose decorated box, rectangular form, the lid and sides carved in deep relief with roses, stained and painted red and green, diamond incised edging, the interior with further poker work decoration of farmhouse scene and roses together with verse, signed and dated 1952. 500 x 300 x 210. See page 13. \$650

231

Trevor Lloyd, 'The Old Mission Home Kohimarama', etching, signed and entitled. 165 x 245. \$150

232

Trevor Lloyd, 'A Rest House, A Shelter in Time of Storm', etching, signed and entitled. 110 x 150. \$150

233

Whites Aviation hand-coloured photograph 'Orokawa Bay' (Bay of Islands), large format. 485 x 755. See page 13. \$225

234

A Whites Aviation hand-coloured photograph 'Queenstown and the Remarkables', large format. 490 x 740. \$375

235

A vintage Feltex N.Z. map rug, machine woven in colours, hei tiki in rondel top left corner, a compass bottom right. 1285 x 680. \$400

236

A N.Z. earthenware crock, Rose Brand by E. Mann, Whangarei 1929, two-tone and with metal handle. See page 16. \$250

————— N.Z.STUDIO ART —————

237

Doris Dutch pottery wall tile, relief stylised landscape with buildings, glazed highlights, amber type glazed matt finish. Incised signature and date to reverse. 350 x 190. \$100

238

An Elizabeth Lissaman eight-piece pottery coffee set, including six mugs, jug and sugar bowl, incised marks including date code for 1972, together with a banded decorated pot, incised marks '1978'. \$180

239

Anneke Borren tall black glazed 'Totem', turned and ridged form, gloss brush decoration on matt black ground. Provenance: From the Estate of the potter Keith Blight. Height 850. See page 16. \$450

240

Greg Barron salt glazed 'cut sided square' vase, tapered form, impressed potter's marks towards the top rim. Height 290. \$300

241

Two Ruth Castle open work basket dishes, of typical circular shallow form. Diameter 340. \$175

242

A good early Len Castle branch pot, slab built earthenware with slightly swollen walls, castellated corners, short neck with wider conforming rim, feldspathic glaze. Early impressed potter's mark. Height 330. See page 16. \$1,200

243

A large vintage Len Castle blossom vase, swollen rectangular form, pale grey all-over glaze, tenmoko to the flat rectangular rim and showing at the corners, impressed potter's mark. 380 x 260 x 425. Provenance: From the Estate Collection of Keith Blight and noted to the base 'This pot was featured at

the entrance of the Auckland Studio Potter's Exhibition 1976. Len sold it to me for under \$100.... I was the Exhibition Designer. Keith Blight 2007'. See page 16. \$2,600

244

A Len Castle pottery vase, cylindrical with tapering foot and short trumpet mouth, feldspar and tenmoko glazes, impressed artist's mark. Height 260. \$450

245

A Crown Lynn (Ambrico) light brown trickle glaze standing elephant. Length 140. \$100

246

A Crown Lynn (Ambrico) pale green and brown trickle glaze kiwi vase. Height 120. See page 16. \$120

247

An early Ambrico (Crown Lynn) American Soldier WWII cereal bowl, traditional mottled brown and green glaze on buff body. Diameter 158. \$120

248

An Ambrico (Early Crown Lynn) trickle glazed elephant, brown with tan highlights. Length 230. \$150

249

A Crown Lynn vase, attributed to Daniel Steenstra, tapering cylindrical shape, decorated with a pattern of triangles of raised white dots on a green glazed ground. Printed and incised marks. Height 135. \$110

250

A John Penman glass cylindrical ewer vase, cylindrical shape with 'cut' spout, in greens and yellows, signed and dated '01. Height 510. \$175

251

A Peter Raos lily art glass vase, ovoid with white flowers encased in cranberry. Signed and dated 1987. Height 140. \$200

252

A Gary Nash 'Phoenician' glass vase, the base faulted, affixed to a granite slab. Overall height 490. \$220

253

A Garry Nash pedestal footed bowl, the black/purple colour with white rim, signed and dated '92. diameter 205. \$225

254

A Ron Reichs cast glass lotus flower on triform stand, the lotus of pink glass, the stand of blue. Overall height 265. \$250

————— GLASS —————

255

Six Victorian glass rummers, with large bell bowls raised on short stems from circular bases with small ground pontils, some small frits. \$240

256

Two Victorian glass lustre vases, trumpet shape with cut white flashing and gilt decoration, suspended with multiple lustres. Heights 250. \$225

257

A Murano glass penguin, the interior

body with swirling gold flecked blue and green tones. Height 230. \$100

258

A Murano glass angel fish, the interior with amber, clear and blue sections highlighted with white canes. Height 175. \$90

259

A Murano glass exotic tall bird, the clear glass base and body with inter-nal banded coloured sections including silver fleck, blue and black. Height 350. \$110

260

A Murano exotic glass bird, clear base, mottled red/orange body with aventurine flecked dark toned wings. Height 305. \$120

261

A large and impressive Murano glass fish, turquoise and cobalt blue hues, chip to one tail fin. 400 x 290. \$150

262

Two Murano AVE M zanfirico millefiori green glass 'tutti-frutti' pieces, a small vase and a triform dish, both with original labels. Vase height 80. \$150

263

A good millefiore glass inkwell, with original stopper. Height 130. \$120

264

A frosted and clear glass bowl, circular, the foot moulded as flowers and leaves. Diameter 280. \$150

265

A 1930s Clyne Farquharson cut glass vase in a stylised leaf and vine pattern, mild baluster form, etched signature to base. Made by John Walsh, c.1935 in Birmingham. Farquharson's cut-glass designs are among the most striking and original cut-glass designs done in Britain in the 1930s. Height 250. See page 16. \$650

— MODERN MOVEMENT —

266

A pair of pewter Art Nouveau vases of bullet shape, designed by Sir Archibald Knox for Liberty & Co. Height 140. \$120

267

An Archibald Knox English Pewter (Tudric) candlestick, shape 0221. Height 135, polished. \$180

268

A vintage silver plate Zeppelin cocktail shaker, the nose cone unscrews to reveal flask with threaded cap (original cork seal) and combination strainer lid/juicer, the base with four fins unscrews to reveal a nest of four small graduated cups and a combination funnel/measure. One fin clearly stamped 'J.A. HENCKELS TWIN WORKS. SOLINGEN GERMANY', along with the Henckels Gemini twins trademark. Gilt wash to interior of all components. Height 320. See page 16. \$850

269

A Wedgwood sculpture of a mother and child monkey group by John

Skeaping, matt white glaze, impressed marks to the side of base and printed mark under base. Height 175. See page 16. \$360

270

A Wedgwood sculpture of a 'Duiker' standing by John Skeaping, matt white glaze, impressed mark to side, printed mark to base. Height 205. \$300

271

A Wedgwood sculpture of a 'Duiker' lying, by John Skeaping, matt white glaze, impressed marks to side, printed mark to base. Length 180. \$260

272

A Wedgwood sculpture of a 'Sea Lion', matt white glaze, impressed marks to side of base, printed marks under base. Height 203. \$360

273

A Wedgwood & Co. model of a standing polar bear, the base as an iceberg, printed mark to base. Height 165. \$180

274

A Keith Murray Wedgwood matt straw glaze spherical vase, in the grenade shape 3801, eight lathe-turned bands encircling the body, printed marks. Faint star hairline under the foot. Height 155. See page 16. \$300

275

A Chryselephantine Art Deco style sculpture, in the manner of Ernst Seger, depicting a standing robed woman flanked by two polar bears raised on a white marble plinth base. Cold painted, patinated bronze and ivory. Height 670, width 655. See page 16. \$3,250

276

A Lalique Naiade Cendrier, circular dish with a raised central tablet in clear and frosted glass, marked 'Lalique France'. Height 100. \$100

277

A Holmegaard Per Lutken green grass large bowl, flat inverted rim, engraved maker's marks to the base. Diameter 335. \$250

— CHINA & PORCELAIN —

278

A Lladro porcelain figure of a dove. Height 280. \$80

279

A German porcelain sculpture of two borzoi hounds, raised on a plinth base. Width 360. \$200

280

An Italian china study of a black panther. Height 620. \$250

281

A rare Meissen porcelain figure of a child, designed by Conrad Hentschel, c.1905, model U150 (child sitting on a pillow) blue crossed sword marks and incised factory marks under the base. Height 125. See page 16. \$500

282

An earthenware plaque in the manner of Della Robbia, a nativity scene in high relief. Height 280. \$140

283

A Victorian Mason's Ironstone jug, chinoiserie on red scale ground. Height 170. \$140

284

An 18th/19thC Dutch Delft chinoiserie lidded urn, octagonal baluster form, the front panel showing a single child within a landscape, elaborate scrolling and floral framing, the conforming domed lid with figured finial, some damage. Height 295. Provenance: Purchased by Mrs A. R. Seccombe in 1927 as part of the house and contents purchase of 'Newstead' of Milford from Mr Reid Bennie. (See also lots 353 and 354 this catalogue). See page 16. \$380

285

A fine quality French Sèvres lidded urn vase, with jewelled and painted panels of lovers and flowers on a richly gilded cobalt ground. Height 250. \$250

286

Five antique English china items, Derby and Coalport style, including a vase, mug, jug, etc., all painted with floral bouquets. \$150

287

A Georgian Newhall jug, lidded sugar basin, coffee can, tea cup and saucer dish, c.1810. See page 16. \$150

288

Nine pieces of 19thC china, cups, saucers, plate and jug. See page 16. \$150

289

Four pieces of 19thC china, a jug, two cabinet plates and a shallow dish, variously floral patterned. \$150

290

A Victorian majolica and silver plate mounted Aesthetic Movement lidded biscuit barrel, Egyptian mask heads to the swing handle, a crane, bird and obelisk to the lid. Height 225. \$140

291

A Victorian Pratt Ware bust of Nelson. Old repair. Height 110. \$80

292

A Crown Staffordshire ink stand, with polychrome floral decoration, two inkwells. Length 260. \$100

293

Doulton Lambeth 1876 tall jug, tapered cylindrical form, relief trellis and rosette decoration, silver plate hinged lid, stamped and incised marks. Height 230. \$120

294

A Victorian Doulton Lambeth salt glazed jug, commemorating Queen Victoria 1837-1897. Height 170. \$110

295

An impressive Victorian Doulton Lambeth baluster jug, with blue, green and brown glaze effects, commemorating Queen Victoria 1837-1897. Height 230. \$175

296

A Doulton Lambeth stoneware bird group, of two cockatiels standing on a rocky plinth. Impressed mark, c.1935

and incised artist's monograms. Height 190. See page 16. \$150

297

A Victorian Doulton Burslem conical vase, with ornate moulded bird's head handles, moulded and painted with frogs. Height 170. \$150

298

A Victorian period Doulton Burslem white bone china dessert set, with floral painting on a peach bloom ground, eight circular dishes with foliate rims, pair of square dishes on scroll feet and pair of oval dishes on scroll feet, printed marks, c.1890. \$200

299

A Royal Doulton two-handled baluster vase, 'Welsh Ladies'. Height 235. \$110

300

A William Moorcroft Wisteria pattern tea cup and saucer. \$120

301

A contemporary Moorcroft vase, inverse baluster shape decorated with stylised flowers, white and green on a black ground. Height 210. \$200

302

A small William Moorcroft 'Pansy' pattern vase, of ovoid shape. Height 130. \$200

303

An Aynsley cabinet plate, painted with fruit, the border profusely embellished with gold, signed D. Jones. Diameter 260. \$150

304

A Royal Worcester hand painted cup and saucer and miniature jug, fruit decoration, signed Roberts. \$160

305

A Royal Worcester potpourri jar, painted by Kitty Blake with blackberries, shape H219, c.1949. Height 130. \$175

306

A Royal Worcester lidded potpourri jar, painted by J. Smith, with pears and grapes, shape H261, c.1951. Height 105. See page 16. \$175

307

An early 20thC Royal Worcester hand painted 'Roses' vase, compressed ovoid form, the four panels each hand painted, printed and painted marks to the base. Height 105, diameter 140. \$250

308

A 19thC Worcester small yellow vase, moulded in relief with three gilt turtles. Printed marks including 'For Richard Briggs, Boston'. Height 83. \$110

309

A large Crown Staffordshire white bone china dinner-tea set, with a polychrome India Tree-style pattern of exotic flowers and birds, six luncheon plates, pair of cake plates, dessert bowl and six dessert dishes, large milk jug and sugar basin, small milk jug and sugar basin, six two-handled soup coupe on stands, six large teacups and saucers, 11 small teacups and saucers, 13 side plates and a circular

serving dish; printed marks including N.Z. Centennial Exhibition 1939-1940, John Bates & Co., Christchurch and Auckland. \$300

310

A Royal Albert 'Rainbow' pattern Art Deco style trio, in pale blue/lime green colourway. \$125

ORIENTAL

311

A Chinese Hotan natural jade boulder, river worn, variable deep orange tan to the exterior rind, clear pale green tone to the interior. Approx. 120 x 100 x 70, 1345gms. \$350

312

A Chinese carved agate cup, cylindrical form with dragon in full relief as the handle to the side, all carved from the same piece, banded pale grey and tan variable tones. Height 80. \$110

313

A small Chinese horn box, drum shape, the lid pierced and carved with bats, the sides engraved with square fret pattern. Diameter 60. \$150

314

A Chinese ivory bi-disc, engraved to one side with figures and to the other side with archaic calligraphy. Diameter 70. \$150

315

A Chinese jade archaic ritualistic dagger, with zoomorphic handle. Length 290. \$125

316

A Chinese hardstone model of a Bactrian camel, green toned stone, the animal's back with cover and trappings. Height 280 \$150

317

A Chinese jade kilin, with gilded and silvered decorative designs painted to its body. Length 280. See page 16. \$200

318

A Chinese grey rock crystal carved figure of Shao Xing, modelled standing before a massive peach, accompanied by a young child. On stand. Height 160. \$150

319

A Chinese fine quality white jade set small rosewood screen, the white jade panel of finely carved twin fish. 107 x 70 x 170. See page 16. \$1,500

320

An old Chinese gilded amber carving of a shishi, plain stylised form, recumbent pose, fitted to a carved hardwood stand. Length 60. See page 16. \$1,500

321

A Chinese Shoushan carved boulder as Shou Lao with long facial hair, the basket supported to his left with a fish, pale tan tone with red highlights. Height 175. \$150

322

A Chinese carved bamboo square

box as the head of a mythical lion, gold and black lacquered highlights to the eyes and teeth, red interior. 105 x 105. \$110

323

Two old good quality Chinese wood carvings, a seated sennin holding bat, height 160 and a fisherman with woven basket, fish and crab, height 200. Age crack in fishing basket. \$200

324

A Chinese bronze libation cup, the hemispherical bowl decorated with ho-ho birds, raised on a knopped circular spreading foot. Diameter 100, height 80. \$150

325

A Chinese carved wooden inkstone, rectangular shape, carved in low relief with bats and clouds framing an oval well. 160 x 100 x 15. \$160

326

A Chinese bronze brush rest, modelled as a flowering branch, archaic seal mark to the reverse. Width 85. \$150

327

A rosewood boxed set of 12 red ink sticks, of various shapes, moulded in relief with Zodiac animals. Case size 310 x 205. \$850

328

A Chinese cast metal statuette of a young boy seated on the back of a water buffalo, he reads from a small book. Length 280. \$225

329

Two small Chinese bronze qilin, each small animal modelled in archaic style. Length 60. \$110

330

A Chinese bone heavenly boat of the gods, modelled as a large sailing vessel with seven gods standing upon the deck. Width 410. \$250

331

A Chinese bronze archaic vessel, rectangular shape with handles issuing from the rim, moulded in low relief with patterns to the walls and raised on four cylindrical feet. Width 190. \$120

332

Two Chinese carved wood figures, one of a young boy accompanied by a foo dog, the other an old votive shrine figure, considerably distressed. Tallest 240. \$120

333

A Chinese bronze shallow trough, decorated in low relief with dragons to the walls and with dragon mask handles issuing from the sides, raised on four feet. 315 x 190 x 100. \$175

334

An old bronze shell shaped dish, naturalistically modelled with crabs climbing over its rim, with cold painted finish. Old repair. Width 470. \$150

335

An ivory snuff bottle modelled as a giant pomegranate, a child climbs upon its side, the stem forms a small spoon as the stopper. Width 85. \$350



122



125



130



156



169



165



166



173



174



186



194



169



189



207



209A



208



212



225



217



221



221



224



214



227



235



229



230



228



233

- 336**
A snuff bottle, of marine ivory or bone, carved as a fruit. Height 55. \$80
- 337**
A fine Chinese carved bamboo brush pot, rounded square form, intaglio cut with mountainous landscape including buildings and figures, rosewood fitted base and top, remains of original lining. Height 125. See page 16. \$2,000
- 338**
An old Chinese carved hardwood figure of Kuanyin, the goddess seated upon a rocky throne, soft well carved detail including drapes to her robe, gilt highlights to her face, chest, hands and feet. Height 250. See page 16. \$1,500
- 339**
An old quality Chinese gilded bronze small shishi, in recumbent pose, head turned, front paws crossed, raised on an old carved hardwood stand. Length 53. See page 16. \$5,000
- 340**
A Chinese rosewood brush pot, 150 x 155. \$150
- 341**
A Chinese silver goblet, by Wang Hing, Shanghai, bowl raised on a bamboo stem from a circular foot. Height 120. \$140
- 342**
Two carved Chinese giltwood panels, tall rectangular shape, each carved and pierced in high relief with numerous figures in gardens and pavilions, tea houses and landscapes. Deep red ochre painted frames. Each 990 x 375. \$500
- 343**
Two old Chinese scrolls, one painted in watercolour with a mountainous landscape, the other in watercolour and ink with birds upon a branch, bamboo highlights. \$300
- 344**
A Chinese cloisonné baluster table lamp base, decorated with flowers and exotic birds on a white ground. Wired for electricity. Height on wood stand 340. \$150
- 345**
A Chinese cloisonné baluster lamp base, decorated with exotic birds and flowers on a white ground. Wired for electricity. Height on wood stand 310. \$150
- 346**
A Chinese collage picture of an eagle alighting on a wind-swept bough, framed and glazed, signed with calligraphy and seal. 390 x 390. \$200
- 347**
A large Chinese cloisonné circular dish on low foot, decorated to the interior with chrysanthemums and blossom, the exterior with geometric patterning on a yellow ground. Diameter 385. See page 16. \$700
- 348**
A pair of famille rose floor vases, the panels to each side decorated with ladies in a garden playing board games, floral decoration, gilded shoulder animal handles and embellishment to the shoulders. Height 1580. Provenance: Gifted to our vendor while in China over 20 years ago. \$1,000
- 349**
A Chinese porcelain brush pot, decorated in famille rose with an audience scene, square seal mark under the base. Height 110. \$180
- 350**
A Chinese porcelain Canton enamel decorated vase, baluster shape with gilded handles issuing from the neck, decorated in polychrome with stylised lotus. Qianlong seal mark under the base. Height 250. \$500
- 351**
A pair of Chinese porcelain Canton enamel decorated vases, ovoid with fan shaped mouths and scrolling twin handles issuing from the mouth, decorated in polychrome with panels of seasonal fruit and flowers on a floral ground. Qianlong seal mark under the base. Height 245. \$300
- 352**
A 19thC Chinese famille rose lidded chamber pot, all-over traditional panelled decoration of figures, florals and exotic birds, elaborate gilt enrichments, minor flake chips. Diameter 240. See page 16. \$450
- 353**
A large and impressive early 19thC Chinese famille rose lidded jar, baluster form, traditional panelled decoration including multiple figures within interior and walled garden settings, the elaborate framing of florals, butterflies and exotic birds, conforming lid, the top with brass collar and hinge and locking fittings, pinned, elaborate gilt enrichments. Height 620. Provenance: By family descent, purchased by Mrs A.R. Seccombe of Auckland, August 1927 as part of the house and contents purchase of 'Newstead', East Coast Rd, Milford from J. Reid Bennie, an English gentleman who came to N.Z. at the end of WWI with his antique collection. A copy of the letter detailing this purchase is available which notes "It is at least gratifying to know that the antiques which we have so painstakingly collected over a period of years are passing into the hands of those who can genuinely appreciate and enjoy the aesthetic in household embellishment". (See also lots 284 and 354 this catalogue). See front cover and page 16. \$6,000
- 354**
An old Chinese large iridescent green glazed vase, elegant ovoid body with flared rim cylindrical neck, unmarked. Height 430, raised on an old carved hardwood stand. Provenance: Purchased by Mrs A.R. Seccombe in August 1927 as part of the house and contents purchase, Newstead, East Coast Road, Milford, from J. Reid Bennie. This vase listed on the purchase register and noted at £6. (See also lots 284 and 353 this catalogue). See page 21. \$1,200
- 355**
An exceptional large old carved ivory tusk, finely detailed as a goddess, natural curved tusk form, the standing goddess in traditional robes with a floral branch held to her right hand, a further basket of flowers to her left, her coiffured hair adorned with an exotic bird, black stained highlights, the thick ivory base plate with carved calligraphy, small area of damage to the surmounting bird's tail. 8.5kgs. Raised on original fitted wood stand. Provenance: Collected by our vendor's parents in the late 1960s while on an overseas excursion. Length 930. See front cover and page 16. \$16,000
- 356**
A Chinese porcelain double gourd vase in the manner of the Ming period, decorated in an underglaze blue with qilin and tigers in a landscape. Height 420. See page 21. \$2,000
- 357**
A large Chinese porcelain vase, inverse baluster shape, decorated in polychrome enamels on a glossy black ground with a design of cranes standing beneath an ancient pine and a fruiting peach tree. Qianlong six-character seal mark under the base. Height 465. \$650
- 358**
A Chinese porcelain lidded vase, decorated in famille rose enamels with an armorial coat-of-arms. Height 390. \$500
- 359**
A Chinese porcelain bottle vase, decorated with landscape panels in polychrome on a powdered blue ground, further decorated with gilt flowers and insects. Height 300. \$650
- 360**
A pair of Chinese polychrome porcelain baluster vases, with mask ring side handles to the shoulders, painted with red and green dragons and with scrolling flowers and stiff leaves at the neck in polychrome. Height 430. See page 16. \$800
- 361**
A Chinese porcelain blue and white vase, ovoid shouldered shape, decorated with three gods and attendants in a landscape. Height 215. \$450
- 362**
An early 1900s Chinese tea kettle in basket, decorated in under glaze blue and white, metal handle, woven basket with interior padding and matching cushion cover. \$150
- 363**
A Chinese blue and white porcelain circular shallow dish, decorated with dragons chasing flaming pearls. Yongzheng marks under the base. Diameter 320. \$300

- 364**
A Chinese blue and white porcelain shallow circular dish, decorated with fruit and flowers. Diameter 280. \$120
- 365**
A Chinese porcelain blue and white vase, decorated with an encircling landscape and buildings, figures and bridge, Double circle mark under the base. Height 230. \$350
- 366**
A Chinese porcelain vase, baluster shape, decorated in underglaze blue in Ming manner with tendrils and stiff leaves, ear handles issue from the neck. six-character Xuande mark under the base. Height 200. \$350
- 367**
A Chinese porcelain vase glazed in pale blue monochrome, baluster shape with mild fluting, everted rim with scalloped edge. Height 190. \$450
- 368**
A Chinese blue and white small oval dish, decorated with floral pattern. Width 140. \$100
- 369**
A Chinese porcelain blue and white water bowl for a bird cage, octagonal section, decorated with flowers, square scroll pattern and Ming mark to rim. Diameter 80. \$150
- 370**
A small blue and white Ming style wine cup, decorated with flowers. Diameter 80. \$150
- 371**
A Chinese blue and white mug, decorated with river landscape with buildings and figures, four-character mark under the base. Height 90. \$150
- 372**
A Chinese porcelain vase, tapering cylindrical shape with trumpet neck, decorated in famille rose with a well-painted figure proffering peonies on a tray. Four-character Qianlong seal mark under the base. Height 180. \$350
- 373**
A Chinese porcelain temple lion dog incense holder, decorated in famille rose, diaper pattern, the dog sits with a trumpet shaped holder issuing from its back. Length 120. See page 21. \$250
- 374**
A Chinese porcelain shallow oval dish, finely polychrome enamelled with an extensive coastal, mountainous landscape including buildings and trees, celadon glazed ground, hair crack. 230 x 150. \$180
- 375**
A Chinese porcelain rouleau vase, decorated with figures in a walled garden, in polychrome and cobalt. Double ring mark under the base. Hairline crack around base. Height 390. \$450
- 376**
A fine Chinese porcelain bowl, hemispherical with everted rim, decorated in enamels with a song bird amongst blossom and ripening pomegranate fruit, six character Guangxu mark under the base. Diameter 125. \$150
- 377**
A small Chinese porcelain wine cup, decorated with fruiting vines, Kangxi mark under the base. Diameter 85. \$150
- 378**
A Chinese porcelain plaque, depicting a deity wearing a flowing orange robe standing above tumultuous waves. 370 x 255. \$450
- 379**
A small Chinese jun glazed dish. Diameter 100. \$150
- 380**
A Chinese porcelain vase, gourd shape, decorated with cherry blossom, birds and bamboo on a mustard ground. Qianlong seal mark under the base. Height 250. \$300
- 381**
A pair of Chinese porcelain gourd vases, decorated in underglaze blue and iron red with dragons. Kangxi mark under the base. Height 240. \$300
- 382**
An old Chinese earthenware vase, ovoid shape with tall neck and beaker form mouth, the neck moulded with a bird figure, green glazed and with incised floral pattern. Height 410. \$150
- 383**
Terracotta lion dogs, with dark glazed finishes. The largest width 305. \$100
- 384**
A Chinese Yixing Ware teapot, squat circular shape, the lid surmounted by a tiger, decorated to the sides with a dragon and bird, a dragon moulded underneath the base. Diameter 115. \$250
- 385**
Five Chinese blanc-de-chine porcelain figures of gods. Impressed marks to the backs. Some faults. Height 130. \$250
- 387**
An old Tibetan priest's jewelled hat, cap type form, entirely jewelled with rows of turquoise, the top with a large circular cabochon, rows of small orange red Mediterranean coral beads and other circular red beads, four circular amber discs highlight the border. See page 16. \$450
- 388**
An old Tibetan priest's hat, cap form with long flap to the back, jewelled with turquoise, red coral, mother-of-pearl, agate and other beads in circular panels, etc., two pendant drops to the sides with silver beads and discs. See page 16. \$450
- 389**
An ivory letter knife, beautifully carved and pierced, the handle with a seated Buddha. Length 235. \$120
- 390**
A small Nepalese bronze bodhisattva, seated in meditative pose upon a single lotus throne. Height 80. \$150
- 391**
A carved ivory standing figure holding shoe with small elephant and mahout - on section of elephant tooth plinth base. Height 130. The base with old repair. \$120
- 392**
Two small Indian ivory carved figures, one depicting a man standing on a snake, the other playing a sitar. Height 110. \$110
- 393**
A carved ivory okimono of a reclining man reading a book. Signed to the base. Width 55. \$1,500
- 394**
A small Japanese ivory netsuke, of an old man and young boy. Slight losses. Height 37. \$100
- 395**
A pair of Japanese bronze vases, baluster shape with water lilies in high relief to the sides. Height 290. See page 21. \$250
- 396**
A Tommo Hamada salt glazed stoneware yunomi, in original box with calligraphy and seal inside the lid. Height 85. See page 16. \$300
- 397**
A fine Japanese hardwood display table, rectangular shape, raised on four small scroll legs with subtle carved detail, joined by fine stretchers simulating bamboo. 760 x 360 x 170. \$250
- 398**
A fine Japanese rosewood display table, the rectangular top raised on carved and pierced frieze and apron elevated on four scroll legs joined by a flat section stretcher. 640 x 365 x 195. \$250
- 399**
An impressive Japanese Edo period Samurai suit of armour, with multi hobnail plate sujibachi ridged helmet, decorative fukigaeshi (turnbacks), russet lacquered iron menpo (face plate), laced multi-panelled throat guard, shoulderplates, chest guards and leg guards in orange and black dominate tones. Complete with two later swords. See page 21. \$4,000
- 400**
An ukiyo-e woodblock print by Kunichika, of a samurai. 320 x 220. \$200
- 401**
A reprint ukiyo-e by Hokusai, 'Bridge at Fukui in Echizen Province'. 245 x 370. \$100
- 402**
A reprint ukiyo-e by Rekisentei Eiri, 'Courtesan with Lamp'. 225 x 150. \$100
- 403**
A reprint ukiyo-e by Katsukawa Shun'ei, 'The Actors Nakaso and Koshiro'. 220 x 160. \$100
- 404**
A reprint ukiyo-e by Tomomasa Ishikawa, 'The Elegant Twelve Months'. 225 x 150. \$100
- 405**
A Japanese ukiyo-e woodblock,



236



227A



239



242



243



246



265



268



269



274



275



284



281



287



288



296



306



320



317



339



338



319



337



347



360



388



352



353



355



387



396

of a cockerel and bamboo. 295 x 190. \$100

406

A large Japanese Imari porcelain vase, ovoid shape with flaring neck, decorated with panels of figures in landscapes and a ground of brocade and sand patterns in typical colours. Height 485. \$225

407

A Japanese ceramic model of a shishi, the temple dog sits, its forepaws raised on a large mallet. Height 370. \$150

TUESDAY 17TH OCTOBER 2017

2ND SESSION at 5.00pm

JEWELLERY

410

A full gold sovereign, 1980. \$400

411

A full gold sovereign, 1980. \$400

412

Ten Dutch 21.6ct. gold 10 guilder coins, one dated 1913, three 1912, five 1917 and one 1925. 67.3gms. See page 21. \$4,200

413

An early 20thC N.Z. made 9ct. rose gold presentation card tray by Kohn, circular form with serpentine border, presentation engraved 'Dr. Geo. de Clive Lowe 1920', stamped gold and maker's marks. Note: Gifted by Lowe to his close friends, Dr Marcus George Pezaro, a relative of our vendor. 85.6gms. Diameter 135. See page 21. \$1,500

414

A heavy 18ct. gold chain, flat decorative links and parrot clasp. 26.2gms. \$900

415

An 18ct. gold Royal Hong Kong Jockey club tie slide, together with an 18ct. gold tie or lapel pin, both with the club's monogram and in original boxes. 9.4gms. \$350

416

An 18ct gold Georg Jensen tie slide, plain design and with marks to base, in original box, 15.2gms. \$500

417

A heavy 22ct. gold chain, mildly decorative links with hook and eye clasp, 27.6gms. \$1,250

418

A 9ct gold sweetheart locket, embossed to the front with an anchor. 5gms. \$150

419

A 14ct. gold snap bracelet, plain design. 13.5gms. \$550

420

A Victorian 15ct. gold brooch, in the form of a pair of scissors with '1894' to the top. See page 21. \$100

421

A 9ct. gold stick pin, a small gold articulated artillery cannon suspended from a pin by a delicate chain. \$100

422

A 9ct. gold charm bracelet, the fine oval links with one bell charm. 9.8gms. \$260

423

A vintage 9ct. gold tiki pendant charm, double-sided. 1.4gms. \$100

424

A 9ct. gold belcher chain, with gemstone set Chanel-style twin C pendant. \$130

425

A gold nugget pendant, together with a fine 9ct. gold chain. Nugget 3.8gms, chain 1.8gms. \$280

426

A small gold nugget pendant, together with a fine 9ct. gold chain. 3.1gms. \$160

427

An antique 15ct. gold bar brooch set with flowers, one containing a small facet-cut aquamarine. \$100

428

A 9ct. gold football medallion, with enamel decoration to the front and dated to the reverse (1936-37). 7.9gms. \$210

429

A pair of 9ct. gold cuff links, each panel with machine engraved decoration to the centre and black Greek key decoration to the edge. 5gms. \$130

430

An 18ct. gold Australian Colonial wedding band, with engraved decoration to the exterior and gold marks stamped to the interior. 6.3gms. \$330

431

A 9ct. gold bangle, plain unhinged design. 8.8gms. \$230

432

An antique gold stick pin, the top set with a polished oval piece of gold stone in a rope edge mount, the pin with original screw-on butterfly, in original box. \$300

433

A 15ct. gold and gold nugget miner's brooch, with shovel, pick-axe and bucket, gold nugget to the centre, 'South Africa' raised on the shovel blade. 3.7gms. See page 21. \$200

434

A 9ct. gold gate bracelet, heart padlock clasp. 10.4gms. \$270

435

A 9ct. gold charm bracelet, the curb link chain with four small charms, dog clip. 15.1gms. \$350

436

A 14ct. Dutch gold fob chain, the heavy curb links with dog clip and floating extra chain with bolt ring for attaching a pendant. 41.1gms. \$1,700

437

A 9ct. gold gate bracelet, padlock clasp. 7.8gms. \$220

438

An ornate 18ct. gold necklace, the meshed chain decorated with 26 small flat discs, the front with graduating size rectangular-form flattened

tubes, each with conforming gold disc. 31.gms. See page 21. \$1,650

439

Three Victorian 9ct. gold bar brooches, variously set with an amethyst, aquamarine and seed pearls and sapphire and seed pearls. 7.1gms. \$150

440

A retro 9ct. gold bracelet, articulated in matt 'bark' finish, together with a companion Bueche-Girod watch, with conforming bracelet strap, in working order. 53.7gms. See page 21. \$1,200

441

A vintage amber graduated bead necklace, the oval beads of good clear clarity and tone, the largest length 25mm. Overall length 720. \$280

442

An Edwardian 9ct. gold garnet and pearl pendant, the scrolling frame has leaves to the centre set with seed pearls, a facet cut garnet to the centre with conforming garnet suspended from base. \$120

443

A heavy vintage Georg Jensen silver necklace, the tube style links with slightly hammered finish alternating with small jump rings, larger conforming push clasp with safety catch, 27.9gms. \$220

444

A vintage cultured pearl necklace, the 161 graduating pearls 3mm to 7mm of deep cream lustre, hand-knotted, the gold push clasp set with 15 small pearls. \$150

445

A vintage branch coral necklace, the small but substantial graduating size branches in a mottled deep pink hue, gold plated push clasp, recently restrung. \$200

446

A vintage ivory bead necklace, the 101 uniform lozenge form beads 8mm in length, ivory screw clasp. \$150

447

An 18ct. gold amethyst pendant, the oval facet-cut pendant claw-set, together with a fine gold chain. 3gms. \$150

448

A heavy silver pendant, in the form of a pig, with suspension ring to the top. \$100

449

A 14ct. white gold black pearl and diamond pendant, white gold diamond set bale attached to the pearl, together with a fine white gold chain. 4.7gms. \$230

450

An Edwardian 9ct. gold peridot and seed pearl pendant, the circular frame set with seed pearl encrusted branches with a round facet-cut peridot suspended to the centre, conforming seed pearl and pendant suspended from base, the bale in the form of a bow set with seed pearls, with fine gold chain. \$250

451

An 18ct. gold pearl and diamond

pendant, a deep cream pearl set to the scrolling frame together with three small brilliant cut diamonds. 1.9gms. Together with a fine 9ct. gold chain, 2.5gms. \$150

452

An antique silver fob chain and medal, the decorative links with T-bar and silver and gold fob, dog clip clasp. \$120

453

An early 20thC Arts & Crafts style silver and garnet? bracelet, the five large oval dark red cabochons in rubover mounts within a frame of sculpted leaves in the manner of Rhoda Wager. One stone with small flake chip. \$200

454

A lapis lazuli baroque pearl and rock crystal bracelet, the 18 baroque pearls spaced by four lapis lazuli beads, the largest supporting a tassel with silver mount, carved lapis bead drop and two rock crystal oval beads with fine needle inclusions. \$300

455

A 9ct. gold gate bracelet, the pierced heart form locket set with a sapphire. 13.1gms. \$350

456

A silver charm bracelet, the small fine curb links set with 35 charms including Buzzy Bee, jandal and a motor scooter. 61.6gms. \$160

457

A Victorian silver and Scottish agate bracelet, the six shaped panels set in silver frames, the silver padlock clasp with engraved decoration to back and agate set to the front. See page 21. \$300

458

A silver and onyx bracelet, the five onyx cabochons in rub-over mount and alternating with five silver roses form links. \$200

459

A silver and onyx Art Deco bracelet, the eight curved silver panels set with polished onyx, stamped 925 TAX Co. \$180

460

A c.1920 carved ivory bracelet, the 10 carved bell flower form beads spaced by smaller round beads. \$180

461

A lady's modern 18ct. white gold and diamond set dome pendant on chain, the circular hollow dome pendant with cast-in channel and micro-claw settings supporting the 90 baguette cut diamonds and 50 round brilliant cut diamonds with TDW of 3.25ct., decorative pierced back, suspended on a fine gold neck chain and pillar bar bale. Valuation available. See page 21. \$3,000

462

An 18ct. white gold ruby and diamond cluster pendant on chain, the rectangular pendant of domed form set with 25 oval facet cut rubies totalling 4.90ct. highlighted with modern

brilliant cut diamonds between, further diamonds to the suspension bale, TDW 0.62ct, suspended on a fine boxlink silver chain. \$1,600

463

A lady's platinum and diamond tennis bracelet, the 32 round brilliant cut diamonds each in a plain round link setting, TDW 5.54cts. See page 21. \$6,500

464

An 18ct. white gold and diamond encrusted lady's modern hinged bangle, the top of three stepped diamond encrusted bands, each with a channel set row of 45 princess cut diamonds, each row flanked by 92 micro-claw set round brilliant cut diamonds, TDW 5.48cts. Valuation available. See page 21. \$5,500

465

An impressive modern lady's 18ct. white gold pendant necklace, the necklace and pendant of encrusted lozenge forms, the pendant with nine joined sections, the necklace with 19 conforming length sections and 12 similar open centre sections, the 950 round modern brilliant cut diamonds with TDW of 7.62cts., colour G-H and clarity SI2-I1. Valuation available. See page 21. \$12,500

466

A pair of modern lady's 18ct. white gold, diamond and pink tourmaline drop earrings, each set with seven variously cut tourmalines in drop and open looping framed sections encrusted with diamonds, the 188 round brilliant cuts with TDW of 1.27ct. Valuation available. See page 21. \$2,400

467

A modern lady's 18ct. gold rubellite and diamond cocktail ring, the four pear-cut rubellites forming a floral section centred by a single brilliant cut diamond, further diamonds encrusted to the open flaring leaf forms and shoulders, the 126 round brilliant cut diamonds totalling 1.26ct. Valuation available. See page 21. \$2,800

468

An impressive modern lady's 18ct. white gold and diamond bracelet, the graduating spiralling circular sections fully encrusted with 1006 modern brilliant cut diamonds framing the larger single central champagne diamonds claw set to the centre of each, the 15 champagne coloured brilliant cut diamonds totalling 5.29ct. Valuation available. See page 21. \$18,000

469

An impressive 18ct. white gold diamond and rubellite set wide cocktail bracelet, the open worked floral lozenge and rectangular sections mostly highlighted with 37 variously cut rubellites totalling 62.77cts. and highlighted with 871 small modern brilliant cut diamonds with TDW of 7.69cts. Valuation available. See front cover and page 21. \$18,500

470

An impressive lady's 18ct. white gold green fluorite and diamond pendant, the large green fluorite of 44.5cts., emerald cut, framed by a single row of round brilliant cut diamonds, further diamonds encrusted to the bale, the 24 diamonds with TDW of 2.60ct. Valuation available. See page 21. \$7,800

471

An 18ct. gold and diamond ring, the central Old European cut 1.48ct diamond flanked by 0.50ct Old European cut diamonds in a wide domed tapering band. TDW 2.48cts. Valuation available. See page 21. \$7,000

472

An 18ct white gold and cluster ring, a 0.32ct modern brilliant cut diamond in a rub over mount and surrounded by six round brilliant cut diamonds in a scalloped shape, TDW 1.40cts, valuation available. See page 21. \$2,000

473

An 18ct white gold, sapphire and diamond ring, the 1.00ct emerald cut diamond in a raised rub over mount and surrounded by twelve fancy cut bright blue sapphires, TDW 1.20cts, valuation available. See page 21. \$4,200

474

An 18ct yellow gold emerald and diamond ring, the 0.90ct emerald cut medium green emerald in a raised rub over mount and surrounded by ten round old cut diamonds in a scalloped setting, TDW 1.60cts, valuation available. See page 21. \$2,600

475

An 18ct white gold yellow sapphire and diamond ring, the 4.42ct oval mixed sapphire of an intense yellow hue, with six square cut carre diamonds in a three-tiered mount to each shoulder, valuation available. See page 21. \$2,000

476

An 18ct. white gold emerald and diamond ladies dress ring, the 5.55ct. oval cabochon emerald held by four claws above an encircling diamond set band, the wide open worked shoulders with scroll design highlighted with further small diamonds. Certificate detailing emerald characteristics available. See page 21. \$1,200

477

A modern lady's platinum ruby and diamond cluster ring, the 16 oval facet cut rubies set in a 4 x 4 pattern with small diamonds between, domed rectangular form top panel, wide tapered plain shoulders. See page 21. \$1,200

478

An 18ct. white gold and diamond solitaire ring, the 0.57ct princess cut diamond claw set with twenty-six round brilliant cut diamonds set to the shank, Colour E, Clarity SI2. Valuation available. \$1,400

479

A Victorian 15ct. gold silver and

diamond brooch, the scrolling silver frame with a yellow gold lining at the back set with sixty-one European and Swiss cut diamonds, TDW 1.78ct, Colour E-F, Clarity VS to SI. Valuation available. \$1,000

480

A 14ct gold Tahitian black pearl and diamond suite, comprising a ring, pendant and pair of earrings, the pieces set with substantial Tahitian black pearls, (ranging from 10mm to 15mm), the ring and earrings with the addition of small diamonds. With original certifications and receipts. \$500

481

A pair of 9ct. gold and pearl earrings, the round gold frame set with grey and cream freshwater pearls, posts for pierced ears. \$120

482

A pair of Chinese green jade and 9ct. earrings, the circular carved jade discs with gold wire fittings. \$100

483

A pair of 18ct. white gold and diamond stud earrings, two 0.60ct. Asscher cut diamonds claw set in posts for pierced ears, Colour F-G, Clarity VS. Valuation available. \$1,250

484

A pair of 9ct gold and diamond stud earrings, a 0.25ct. round brilliant cut diamond claw set and attached to posts for pierced ears. In vintage ivory box. TDW 0.50ct \$450

485

A pair of 1960s 'Master Crafts' 9ct. rose gold and greenstone cufflinks, lozenge greenstone cabochon panels in rub-over mounts, original box. \$120

486

A Colonial 9ct. gold and greenstone cross, the centre of cross set with N.Z., with traditionally engraved cap and suspension ring to top. See page 24. \$280

487

A Colonial 9ct. rose gold and greenstone bracelet, four alternating 'bow tie' type greenstone links, each carved intaglio with a kiwi between unusual gold links, bolt ring clasp with safety chain. See page 24. \$450

488

A colonial 9ct. gold and greenstone heart pendant, the centre of the heart with a gold fern and N.Z. gold suspension ring. \$140

489

A contemporary large silver and tusk pendant, the two tusks with silver caps attached by way of a silver ball, suspension ring to the centre. \$200

490

A Colonial 9ct. gold and greenstone pendant, the greenstone carved with a Maori chief intaglio, the unusual scrolling gold cap with suspension ring. \$180

491

A contemporary silver and 'Marsden

flower' pounamu pendant, the rectangular form silver set with a polished piece of flower pounamu, suspended on a fine silver chain. Length of pendant 20. See page 21. \$300

492

A 9ct. greenstone and seed pearl pendant, the scrolling frame set with a small cabochon greenstone to the centre and four seed pearls to each corner, marked 9ct. and G & W, suspended on a decorative fine chain. 5.3gms. \$150

493

A 15ct. gold N.Z. framed Wedgwood brooch, the jasper ware plaque of rectangular form with chamfered corners in blue and green, the interior decorated with dancing cherubs, 15ct. gold rub-over mount stamped with G & T Y Ltd, with safety chain. Length 70. See page 24. \$250

494

A vintage 18ct. white gold amethyst and diamond lady's dress ring, the circular vibrant purple facet cut amethyst held high in a coronet type mount with four small modern brilliant diamonds set to the corners, bars between. \$180

495

A modern lady's 18ct. white gold sapphire and diamond dress ring, a central oval facet cut sapphire claw set above an open worked design including two conforming oval bands, bead set with small diamonds. \$250

496

An 18ct. white gold ruby and diamond dress ring, the oval facet cut ruby claw set above an encircling band of claw set diamonds. Certificate detailing ruby characteristics available. \$500

497

An 18ct. white gold emerald and diamond dress ring, 2.08ct. oval facet cut emerald held by four claws above an encircling band of small diamonds. Certificate detailing emerald characteristics available. See page 21. \$360

498

A platinum sapphire and diamond dress ring, the oval facet cut sapphire of 1.14ct. flanked by three modern brilliant cut diamonds, claw set. Certificate detailing sapphire characteristics available. \$300

499

An 18ct. yellow gold band set with a brilliant cut diamond, of approximately 0.25ct. Total 10g. \$450

500

A retro 9ct. gold and citrine cocktail ring, the large emerald cut citrine claw set in an unusual open sinuous mount. See page 21. \$220

501

An 18ct. gold seal ring, the Georgian rock crystal seal carved intaglio with a mythical sea serpent, in a rub over mount with wide taper band. See page 21. \$750

502

A Victorian 18ct. gold mourning ring, set with a carved agate shield surrounded by small seed pearls, the band engraved with details and date (1863) on the interior. \$280

503

A gent's 9ct. gold and amethyst ring, the large oval amethyst with a facet cut base in a rub over mount with wide tapering shank. \$130

504

A 9ct. gold opal and diamond ring, three oval cabochon opals in a London Bridge mount with four small diamonds. \$120

505

A 9ct. gold garnet and diamond ring, three facet cut garnets in a London Bridge mount with four small diamonds. \$120

506

An 18ct. gold emerald and diamond ring, the three emerald doublets claw set with two small diamonds. \$300

507

An 18ct. gold and three stone diamond ring, a central old cut diamond claw-set with a small diamond to each side, high tapering shoulders. \$250

508

A Victorian 18ct. rose gold and diamond ring, the central rose cut diamond in a twisted mount set with a further eight small rose cut diamonds. \$160

509

An 18ct. gold and diamond Art Deco ring, the 0.25ct. round brilliant cut diamond claw-set with two smaller diamonds to each side, upright shoulders. \$180

510

A 9ct. gold gents chrysoberyl ring, the oval cats eye gem in a rub-over mount in a wide tapering band. 6.9gms. \$180

511

A lady's estate 18ct. yellow gold, diamond and sapphire cluster ring, the central oval facet cut sapphire raised above two rows of baguette and small round brilliant cut diamonds, further diamonds to the shoulders. See page 21. \$600

512

A large silver and opal ring, the free-form mount set with a large polished piece of dark blue opal, stamped STG and HMJ. See page 21. \$200

513

A silver and opal ring, the cabochon opal in rub-over mount, with red fire. \$100

514

An estate 18ct. yellow gold ruby and diamond bridge ring, the three oval facet cut rubies spaced by two pairs of round brilliant cut diamonds. \$300

515

Three antique pieces of jewellery, a Georgian gold mourning ring and two small Victorian compasses set in ag-

ate, one a heart pendant, the other a brooch. \$150

516
A pair of 15ct. rose gold and onyx cuff links, the onyx panels with a small old cut diamond to the centre. \$150

517
A Victorian 9ct. gold compass fob pendant, the compass behind glass in a square rub over mount. \$180

518
An antique 15ct. rose gold and carnelian fob spinner, one side with Persian script, in a rub over mount and attached to a high sided gold frame. See page 24. \$450

519
An antique 15ct. gold fob seal, the ornate frame set with a blank amethyst seal. \$300

520
A Georgian 15ct. rose gold and carnelian fob seal, the carnelian in a rub over mount, with intaglio of a running hound, large scrolling frame with suspension ring. See page 24. \$450

521
A 15ct gold and citrine fob seal, in the form of a griffin's head with a blank citrine seal. See page 24. \$150

522
A colonial 9ct. rose gold and goldstone pendant, the large pendant in a gold frame with engraved gold cap, some cracking to the goldstone. See page 24. \$300

523
An old ivory bangle, wrythen ribbon carved and with conforming following beaded detail. Diameter 80. \$140

524
A pair of vintage 9ct. rose gold and onyx cufflinks. \$110

525
An antique 9ct. gold peridot and pearl bar brooch, the oval facet-cut peridot in a rub-over mount to the centre with five seed pearls to each side. \$100

526
A 9ct. gold amethyst and seed pearl set sword brooch, the pommel in the form of a heart set with seed pearls and an oval facet-cut amethyst. \$100

527
A 9ct. and chrysoprase bar brooch, the oval cabochon in a rub-over mount to the centre of a plain bar. 3.4gms. \$100

528
A silver and amethyst Arts & Crafts brooch, the hand-crafted frame with scrolling and ball decoration, a large facet-cut amethyst in rub-over mount to the centre. \$100

529
An antique 15ct. gold amethyst and pearl bar brooch, the round facet-cut amethyst in a rub-over mount and surrounded by ten seed pearls, conforming seed pearl set to each end. \$100

530
An antique 9ct. gold and agate

cameo brooch, the carved agate in the form of a classical woman, set in a rub-over mount with decorative gold frame, with safety chain. \$350

531
A retro 14ct. gold and diamond brooch, the scrolling yellow and white gold frame set with two small round brilliant cut diamonds, 3.9gms. \$160

532
A Victorian Scottish carnelian and gold brooch, the stylised agate bow set on a rose gold frame. See page 24. \$150

533
A Colonial 15ct. gold and moonstone bar brooch, the plain wide bar set with a cabochon moonstone to the centre, by G & T Young, Dunedin. \$140

534
A black enamel and gold metal Dunhill lighter, in fitted box. \$100

535
A rare Dupont lighter, blue enamel banding to a silver metal, in original box \$400

536
A Dupont lighter, matt silver metal with gold tones, in original box with Dupont guarantee card. \$200

537
A Dupont lighter, black enamel and silver metal, the front decorated with a dragon, together with instruction book, guarantee card and brochure. In original sealed wrapping. \$350

— CLOCKS & WATCHES —

538
A Victorian silver hunter pocket watch and fob chain, by F. Bramel, the case hallmarked London 1864, the chain of wrythen links with Albertina type tassel attached. \$120

539
A 9ct. gold hunter pocket watch, the exterior case profusely engraved, the white enamel dial with Roman numerals, Rotherhams stem wind, in working order. 50.4gms. See page 24. \$700

540
An unusual 18ct. gold cased chronograph by J.J. Badollet & Cie, Geneve, the hunter case with radial machine engraved pattern and engraved crest to the cover (an eagle displayed), inside back cover with coat-of-arms of Mosley (sable, a chevron between three mill-picks argent); the white enamel dial with sweep seconds hand, two subsidiary hour dials flanking a sub-seconds dial. Glass absent. Dust cover engraved: 'Examined by E.J. Dent, 82 Strand' above four winding/adjustment holes. Overall diameter 50. See page 24. \$2,500

541
A 14ct. gold Dugena lady's wrist watch, the matt gold dial with gold batons, stretch 14ct. gold bracelet, in working order, 26.1gms. \$850

542
A vintage Rolex lady's wristwatch, the

gold-plated tank case with stepped Art Deco style decoration to each side, Arabic numerals and seconds dial to champagne toned dial, marked Rolex, working order with manual wind, later brown crocodile pattern strap, engraved to back and dated 1943. See page 24. \$550

543
A vintage 14ct. gold Baume & Mercier lady's wristwatch, the round gold toned dial with gold batons, marked Baume & Mercier Genève, with two tone 14ct. gold mesh strap, 39.7gms (excluding movement), stamped 14k to back and clasp, not in working order. See page 24. \$1,000

544
A vintage 9ct rose gold lady's Rolex wristwatch, the gold toned dial with Arabic numerals within silvered circles, 9ct. gold strap, in working order, 19.6gms (including movement). See page 24. \$250

545
A vintage Rolex gent's wristwatch, the 1960's Oyster Precision gold plated watch, the champagne coloured enamel dial, with seconds hand and gold toned batons, marked Rolex Oyster Precision, later black leather strap, working order with manual wind movement. See page 24. \$850

546
A vintage Rolex gent's wristwatch, the 1950's Oyster Precision stainless steel watch with seconds hand and gold toned batons to black enamel dial, Rolex crown instead of the number 12, marked Rolex Oyster Precision, later black leather strap, in working order with manual wind movement. See page 24. \$850

547
A brass cased carriage clock, with white enamel dial with Roman numerals and minute scale. Engraved with presentation inscription. With Morocco travelling case and key, working. Height 105. See page 24. \$250

548
An Edwardian brass drum cased mantel clock, with white enamel dial with Roman numerals, alarm dial at VI, hands absent, the escapement visible through glass panel to the top; French movement, requires attention. Diameter 100. \$100

549
A rare silver plated ticket clock, of cylinder shape, c.1930. Height 130. \$200

550
A 19thC walnut Vienna regulator wall clock, with fluted column mouldings and decorated pediment, the circular white enamel dial with Roman numerals, the pendulum movement with twin weights. With key. Height overall 120. \$900

551
An Edwardian Georgian Revival bracket clock, walnut cased, white



399



356



354



395



438



373



413



433



420



412



463



440



457



466



467



461



464



468



469



465



491



470



471



472



473



474



475



476



477



497



500



501



511



512

enamel dial with Roman numerals, striking movement. Marked 'Charles Desprez, Bristol'). Height 280. \$175

552

A Waltham deck watch, brass cased in gimbal mount, mounted in triple layer deck case, silvered dial with Roman numerals, minute indicators, subsidiary eight-day reserve power dial along with a subs-seconds dial. The case contained in an outer deck box with latched hinged cover and securing leather strap, the case engraved 'U.S. Navy, No. 537'. Watch diameter 75. See page 24. \$2,000

553

A 19thC French ormolu and cloisonné highly decorative mantel clock, the front with two hand painted classical porcelain panels of a gent and his companion, cloisonné inlay to the frame, finials and large urn form pediment, the conforming circular framed porcelain dial suspended within the glazed case, the French movement striking on a gong with suspended mercury filled pendulum. 270 x 165 x 420. See page 24. \$1,200

554

A brass skeleton clock, with black and white cartouche Roman numerals and red painted hands, the anchor escapement with fusee and passing strike, under glass dome. With key. Height overall 500. \$1,200

555

A 19thC French ormolu and marble portico clock, the cylindrical gilt metal movement housing with glazed door before the white enamel dial with Arabic numerals and floral swags, all supported with finials above the four pale salmon pink plain columns and platform base. Height 395. With key and pendulum. See page 24. \$650

556

A late 19thC French ormolu and marble nymph-figured mantel clock, the gilded bronze winged nymph leaning upon the tall arched mottled marble case housing the dial, conforming marble plinth base, classical ormolu mounts, the quality French silk suspension movement striking on a bell, with pendulum and key. Height 560. See page 24. \$2,000

SILVER

557

A George IV silver vinaigrette, rectangular form, finely ribbed, the gilt interior including engraved and pierced scrolling grill. Birmingham 1825 possibly by Thomas Simpson Jr. See page 24. \$220

558

A George III silver vinaigrette, rectangular form with chamfered corners, scale type wriggle work to the lid, the gilt interior with lozenge pierced grill. Birmingham 1818 by Samuel Pemberton, a noted vinaigrette maker. \$220

559

A good Victorian silver vinaigrette, rectangular serpentine form, elegantly machine engraved in banded designs, the lid with circular belt framed cartouche engraved 'Amy', the gilded interior with leaf scroll engraved and pierced grill. Birmingham 1859 by Alfred Taylor, a noted vinaigrette maker. \$260

560

A William IV silver vinaigrette, the interior with original grill and gilt wash, the exterior with floral decoration, Birmingham 1831 by Edward Smith. \$120

561

A George III silver snuff box, elongated octagonal form, the lid with fine angular engravings and vacant shield cartouche, suspension loop to top, gilded interior. Birmingham 1798 by Samuel Pemberton. See page 24. \$220

562

A 19thC French silver snuff box, oval form with lid and base embossed with a trophy group, gilt wash to interior, c.1800. \$150

563

A large Edwardian cut crystal and silver scent bottle, the hobnail cut spherical body mounted with a domed hinged cover, embossed with foliate scrolls, opening to reveal a small stopper. Sheffield 1902 by Lee & Wigfull. Height 140. See page 24. \$150

564

An early 20thC silver embossed tall cylindrical scent bottle, hinged lid, profuse leaf scroll embossing. Length 122. \$120

565

An early 1900s silver framed perfume atomiser, the exterior profusely decorated, Birmingham 1912, together with a Mexican silver framed perfume bottle. \$100

566

Three Victorian coloured glass scent bottles, with cut decoration and silver tops, various shapes, red, blue and green. Height approx. 100. \$200

567

A rouge pot and smelling salts jar, both with silver and enamel tops. Some rim distress. \$80

568

A Victorian silver baby's rattle, with mother-of-pearl handle, modelled with a seated bear. Length 140. Birmingham 1898. See page 24. \$200

569

A George V silver posy holder, in the form of a golf bag and club. Birmingham 1910. Length 100. \$120

570

A pair of Australian silver napkin rings, marked with maker's cypher. Oblong shape. \$100

571

A Georgian style silver decanter ticket, 'Whisky'. London 1965. \$60

572

Three silver decanter tickets, 'Whisky', 'Sherry' and 'Port'. London 1977. \$120

573

A Victorian silver seven bar toast rack, London 1891. 165gms. Length 140. \$150

574

A pair of small silver toast racks, of four divisions raised on an open frame with ball feet. Birmingham 1925. \$125

575

A Russian silver and cloisonné cream jug, baluster shape with scroll handle, raised on three ball feet, the walls and handle decorated with polychrome enamel cloisonné. 84 Zolotnik mark and makers' mark under the base. Height 70. See page 29. \$150

576

An old Russian silver and enamel chakra cup, baluster form with stylised rooster handle, elaborately enamelled in various blue, red and white dominant tones, Russian Cyrillic script to the neck. Stamped marks including 'A.C' above 1895, possibly for Aleksandr Alaekseyevich Smirnov. 139gms. Height 100. See page 29. \$450

576A

A Russian silver cream jug, of rococo style with scroll handle and three shell feet, 84 zolotnik mark. 70gms. Height 75. \$100

577

A large harlequin set of German .800 silver cutlery, mainly two patterns and including 12 of the following; dessert spoons, dessert forks, cake spoons, fish knives, fish forks, teaspoons, coffee spoons, fruit knives and forks, dinner knives, luncheon knives; 11 cake spoons & table forks; butter knives and rests (6), cake forks (5), pairs: salad server, pickle forks, fish servers with gilded blades; serving utensils (4), serving spoon, butter knife, cheese knife, baby pusher and odd dessert fork. Total weight (incl. knives) 980gms. Contained in seven drawer cutlery cabinet, the bottom drawer with collection of oddments, including cutlery, candelabra capitals and drip trays etc. Provenance: Originally belonging to Benjamin David Magnus born Hamburg died November 1942 in Terezin concentration camp (Czechoslovakia, River Alba). \$3,750

578

An American silver cutlery set, by Rogers, Lunt & Bowen, 'Mount Vernon' pattern. Comprising: table knives (12), table forks (18), dessert spoons (12), dessert forks (13), teaspoons (9), coffee spoons (12), butter knives (12), fruit forks (13), serving utensils (4). Total (including knives with plated blades) 3500gms. \$1,200

579

An American silver 51-piece cutlery set, consisting of eight each dinner knives and forks, dessert spoons and forks, teaspoons, coffee spoons along

with a jam spoon, butter knife and cake slice, in the Damask Rose pattern, 2400gms including knife blades. \$1,200
580

A George III silver claret jug, vase shaped with gadrooned rim and border, domed hinged lid with acorn finial, cane bound handle (distressed). London 1775 by Louisa Cortauld and George Cowles. 630gms. Height 300. See page 29. \$700
581

A George II silver coffee pot, of mildly tapering form on circular spreading and domed foot and with high domed hinged cover with knopped finial, anthemion decoration to spout, double scroll boxwood handle. Engraved underneath with a betrothal triangle 'M over T*E'. London 1739, attributed to Francis Spilsbury I (marks rubbed). Weight 735gms. Height 245. See page 29. \$1,200
582

A George III silver oval teapot on four ball feet, fluted decoration, ivory handle and finial. London 1813 by Thomas Radcliffe. Weight 295gms. See page 29. \$400
583

A George III silver tea set, swollen square section bodies raised on four feet, each piece decorated with a square scroll border, the teapot presentation engraved, some repairs. London 1802 by Robert & Samuel Hennell. Total weight 1035gms. See page 24. \$550
584

A Victorian large silver plate table centrepiece on tray, by H.D. Wilkinson of Sheffield, England the mirrored tray with decorative relief border and four protruding scrolling feet, the large baluster stand with conforming base and four removable arms each supporting a cut glass dish, a matching larger dish to the raised central section, one small dish with crack and minor chipping. Provenance: Ex. a private Auckland family, accompanied by a 1970 George Walker Ltd receipt. See page 24. \$2,000
585

A George V silver sauce boat, oval raised on conforming spreading foot with flying scroll handle. Birmingham 1935 by Charles Packer & Co. Ltd. (Jubilee mark). \$110
586

A silver sauce boat, oval with vertical ribs raised on a reeded foot. London 1936 by Josiah Williams & Co. \$140
587

A cased pair of silver sauce boats, Sheffield 1932 by Viners Ltd. \$150
588

An 18th century Irish provincial silver sugar bowl, circular with serpentine rim (some tears), wrythen fluted and punch scroll decorated body with rondel centre, raised on three legs

with lion mask knuckles and paw feet. Marked 'STERLING', probably Cork or Limerick. Gilt washed interior. Diameter 140, height 70. 196gms. See page 24. \$500
589

A rare Charles II trefid silver child's spoon, plain oval bowl with flame back and rat's tail, the handle engraved with flowering tendril. London 1679 by Laurence Jones. Length 140. See page 29. \$250
590

A set of six cased Liberty & Co. silver and gemstone finial coffee spoons, the original fitted box with Liberty mark to interior, each spoon with Liberty & Co. maker's mark and hallmark for Birmingham 1925, each with a different gem stone cabochon finial. \$220
591

A George III sugar sifter ladle, the circular gilt washed bowl with scalloped edge, pierced and embossed with fruit, leaves and berries, the stem with engraved chevron pattern, dog nose finial with engraved decoration. London 1789 by Thomas Wallis II. \$120
592

A Victorian cast silver apostle caddy spoon, wrythen twist stem, other stylised figure at the junction with the oval gilt bowl. London 1871 by Henry Holland. \$140
593

A 19thC Dutch fancy cast silver caddy spoon, fancy scrolling stylised dragon form handle, the oval bowl with embossed panels and designs. Dutch hallmarks and London import marks for 1888. \$100
594

Two antique Dutch silver caddy spoons, both with cast figural relief. \$140
595

A 19thC Dutch silver caddy spoon, the finial sculpted as a sailing ship, its captain with telescope, the scoop form bowl with cast relief of a windmill scene, import marks for Sheffield 1898. \$120
596

A boxed set of six Old English Jubilee silver teaspoons, London 1935. \$75
597

A Georgian silver salt spoon, three Victorian silver salt spoons, a silver mustard spoon 1930 and two small EP spoons. \$80
598

Eight Georgian and Victorian fiddle pattern silver sweetmeat spoons, various dates and makers. Weight 340gms. \$200
599

Two Victorian silver table spoons, fiddle and shell pattern. London 1841. \$140
600

A cased pair of silver bottom marked berry spoons, c.1770, probably by Philip Roker III. In case. \$200

601

A cased pair of silver seal top spoons, Sheffield 1923 by Mappin & Webb Ltd. \$200
601A

A silver anointing spoon, in case. Birmingham 1972 by A.E. Jones. \$100
602

A William IV silver pie spoon, fiddle pattern. London 1836 by William Eley. 138gms. \$150
603

A George IV silver pie spoon, Old English pattern. London 1821 by Solomon Royes. 120gms. \$150
604

A pair of ornate American sterling silver servers, length 235. Pat. 1893. Weight 142gms. \$80
605

Five American sterling silver small spoons with gilded bowls and ornate handles with Aphrodite figures. Weight 125gms. \$80
606

A c.1900 European silver large ladle, plain shaped flared handle stamped to the back '800', the circular bowl with gilded interior. 227gms. \$200
607

An Edwardian silver sugar caster, cylindrical with domed foot, ribbed body with turn-off cover and piercing and knopped finial. London 1902 by Wakely & Wheeler. Height 160, 194gms. \$125
608

A George II silver pear shape cream jug, classically embossed and raised on three feet, engraved dragon head armorial. London 1737, makers mark rubbed. 79gms. \$200
609

A Victorian silver sugar basket, boat shape with serpentine reeded rim and reeded swing handle, raised on an oval spreading foot. Chester 1895 by Nathan & Hays. Width 120. \$125
610

A George IV silver milk jug, squat oval shape raised on a cast four footed base, the swollen body with floral repoussé. London 1826. 225gms. \$180
611

A heavy George III silver sugar caster, vase shaped with tall pierced dome cover. London 1813. 213gms. \$300
612

A George III silver pear shaped creamer, raised on three pad feet. Some faults. London 1743 by Edward Wood (marks rubbed). 78gms. Height 90. \$100
613

A cased three-piece condiment set, mustard pot, pepperette and salt cellar. In presentation case. Birmingham 1937 by William Suckling Ltd. \$120
614

An early 19thC re-silvered Old Silver Plate chamber stick, with snuffer and scissors. \$120



615
A pair of Georgian style chamber sticks with snuffers, the dishes and nozzles with gadrooned rims, acanthus capped handles supporting conical snuffers. Birmingham 1973 by Hampsons. Total weight 587gms. See page 29. \$500

616
A George III silver goblet, plain ovoid bowl raised on a circular spreading foot from a square plinth base. Monogrammed 'JEC'. London 1793 by Robert Hennell I. 225gms. Height 155. \$175

617
An Edwardian silver mug in leather case, of plain design with c-scroll handle, gilded interior. London 1901 by Goldsmiths & Silversmiths Co. Ltd. 190gms. Height 85. See page 29. \$325

618
A pair of Victorian silver pepperettes, vase shaped embossed with floral designs to the body and conforming designs to the tall domed tops. London 1895 by George Maudsley Jackson. 146gms. Height 120. \$200

619
A pair of American silver cauldron salt cellars and a pair of Victorian silver salt spoons, the cellarettes of compressed circular form with gadrooned rims, decorated repoussé and with three lion mask knuckles and paw feet. By J.E. Caldwell & Co.; the spoons with apostle finials and twist stems. Birmingham 1877 by Hilliard & Thomason. Total 175gms. \$175

620
A silver cigar box, plain rectangular shape, the hinged lid with armorial crest and 'With Best Wishes'. 230 x 140 x 60. \$400

621
An old Sheffield Plate decanter coaster, gadrooned rim, along with a William IV squat circular teapot, floral embossed. \$150

622
An Edwardian silver plated two-decanter tantalus set, height 345. \$150

623
A set of six Pakistani silver coasters, each decorated with chased and engraved tendrils. Diameter 80. \$120

624
A Siam silver cigarette box, rectangular shape, the hinged lid embossed with a god carrying lightning. Width 140. \$120

625
A heavy Indian silver modernist dish, of oval shape, raised on four conical feet, embossed with two bands in high relief of figures and elephants. 290gms. Width 25. \$275

626
A Georg Jensen stainless steel champagne cooler, the free form cooler in original box. \$150

627
Assorted Georg Jensen stainless cutlery, eight dinner knives, four dinner forks, four fish knives and forks from the Copenhagen collection together with four desserts spoons from another collection, in three boxes and with plastic covers. \$150

628
A silver plated mounted cut crystal claret jug, faceted conical shape, the mount with mask spout. Height 280. \$200

629
An Edwardian silver dish, oval shape with embossed and pierced walls, the base decorated with a swag border. London 1904 by Robert Pringle. 203gms. Width 265. \$275

630
An Edwardian silver plate banqueting lamp, the tapering hexagonal form column on conforming base with wide drip tray holding a hobnail cut crystal reservoir, with original fitting to top, chimney absent. Height 650. \$300

PERSIAN RUGS

631
Three Passamaneria Toscana Venetian embroidered cushions, with tasseled fringes. Each 310 x 310. \$90

632
Three Kilim cushions, each approx. 370 x 370. \$120

633
A Persian Afshar kilim horse cover, with tasseled border, intricate designs of birds, animals and floral motifs. 1500 x 1400. \$500

634
A fine old Persian silk prayer rug, the mihrab in earth tones, decorated with floral motifs and surrounded with multiple panels. Some wear. 850 x 140. \$350

635
An Afghan hand knotted carpet, the field decorated with a trellis of latch-hook and 'snowflake' motifs. Framed by a stylised palmette border, red and blue tones. Some patches of colour loss. 2900 x 1930. \$350

636
An Afghan hand knotted rug, decorated with a large geometric medallion to the centre, surrounded by rosettes and 'snowflake' motifs on terracotta ground. 2470 x 1530. \$350

637
A Turkish hand knotted rug, the field decorated with three conjoined medallions with latch-hook outline, framed by a broad palmette border between narrower guards. 1900 x 1200. \$240

638
An old 'American Sarouk' rug, the field decorated with the herati pattern, framed by three borders. Considerable wear. 2400 x 1400. \$150

639
A Turkish Konya hand knotted rug, the field decorated with geometric patterns in madder, indigo and ivory, framed by a star rosette border. 2350 x 1400. \$250

640
A Turkoman tribal rug, all wool, the field decorated with 12 stylised guls, framed by scattered rosettes and with two geometric borders, pale plum tones. 1650 x 1000. \$200

641
An Iranian Hamadan runner, the field decorated with stylised birds and floral motifs on a black ground, framed by a row of boteh motifs and a stylised border with blue ground. 3850 x 1050. \$450

642
An Iranian Sarouk hand knotted carpet, the pale field with a central medallion and islimi tendrils framed by a lotus meander border. 2000 x 1300. \$210

643
A hand knotted Baluchi rug, the field decorated with a diagonal pattern of geometric motifs in cinnamon and charcoal on an indigo ground, framed by two borders of geometric motifs. 1960 x 1000. \$225

644
A Turkish hand knotted rug, with hexagonal medallion on a shaped field with flowers in the quadrants and sculpted pile panels at either end, framed by a meander border with apricot ground. 1900 x 1000. \$175

645
A Turkish Adler runner, the field decorated with three principal medallions and six secondary medallions in indigo and red on an ivory ground along with floral tendrils, framed by multiple borders. 3200 x 850. \$450

646
A hand knotted Iranian carpet, decorated with a large central medallion with zig-zag outline on a soft tomato red ground, framed by stylised vases of flowers and multiple borders. 2250 x 1650. \$375

647
A Tabriz runner, the central plain cerise ground surrounded by a curvilinear floral border, signature in panel to one end. 3400 x 1280. \$280

648
A hand knotted Persian Shahr Babak rug, with two large diamond medallions, bold designs and boteh motifs. 1470 x 1110. \$320

649
A fine Hamadan Lillian Persian wool on cotton rug, with a floral field on a pink ground and multiple border guards in traditional colours. 1450 x 700. \$400

650
A traditional Persian rug, the open field of dark blue containing a large central vase medallion surrounded by repeat-

ing curvilinear motifs to the quadrants, narrow border guards and thicker central guard. 1400 x 1080. \$120

651

A finely knotted Afghan Baluchi rug, the field decorated with bold stylised floral medallions, multiple border guards, rich dark colours and ivory. 2000 x 1200. \$400

652

A hand knotted Persian Shahr Babak rug, with two large medallions to the centre. 1400 x 1000. \$380

653

A short Afghan Turkoman runner, traditional tones and designs. 120 x 80. \$200

654

A large hand knotted Hamadan carpet, the field decorated in a herati pattern of predominantly crimson and Prussian blue tones, and framed by a broad floral meandering border. 3800 x 2680. \$850

655

An Iranian Kashan carpet, hand knotted wool pile, central medallion on a floral field with a traditional red background, the quadrants reflecting the central medallion, surrounded by multiple border guards of floral curvilinear design. 3850 x 2450. \$1,000

656

A large hand knotted Persian Nain rug, of traditional formal decoration in pale colours, almost square shape. 2000 x 2300. \$650

657

An impressive hand-knotted Persian Mashhad rug, the burgundy field containing a large central medallion, curvilinear motifs to the background and quadrants, surrounded by multiple border guards. 2950 x 1950. \$750

658

An old Chinese hand knotted wool carpet with circular medallion, butterfly and flower motifs and three border guards, colours of blue and green on a salmon pink ground. 2700 x 3700. \$750

659

A hand knotted Persian Tabriz carpet, formal floral designs with multiple border guards in typical colours. 2000 x 3000. \$1,200

660

A large hand knotted Persian Meshed carpet, formal floral designs with three border guards in typical colours, mainly shades of red, green and blue. 3000 x 4000. \$1,500

661

A modern Moroccan carpet, multi coloured and multi patterned, wool on cotton, bought in Fez by the vendor for \$3000. 2470 X 1820. \$800

662

A fine Persian Tabriz silk hand knotted rug, the vibrant ivory field with central floral medallion flanked by two smaller medallions and intricate curvilinear

floral and tendril motifs, surrounded by quadrants and thick border guards. 2000 x 1500. Some minor discolouration. \$2,800

663

A modern Greg Natale rug, 'South Beach', geometric curves in pistachio green, black and white, hand tufted in NZ wool (new 'replacement' quotation available). 1700 x 2400. \$1,400

FURNITURE

664

A late 19thC mahogany plant stand, in the Chippendale manner, the octagonal tray top supported on a cinquefoil fluted column raised from a carved tripod base, incorporating a cast iron ball stability weight. Height 1400. See page 32. \$400

665

An oak wine barrel bottle storage shelf, the bottle cut in half and fitted with shelves to accept 17 bottles. Diameter 750. \$150

666

A bentwood hat and coat rack, traditional form with umbrella stand to the base and hooks to the top. 1700. \$250

667

A 19thC Nicholas Gollington walnut campaign chair, the caned seat stamped with maker's details to the base, 'Gollington's Patent Sept. 19 1868', original finish. \$800

668

A Victorian mahogany towel rail, with barley twist supports. 650 x 320 x 850. \$120

669

A Victorian oak wine table, the circular top with shaped border on turned pedestal and carved tripod base. Diameter 530. \$120

670

A George III corner washstand, the middle shelf with a small central drawer, shaped gallery to top, the shelf to base with small shaped stand for jug or bowl. 665 x 446 x 993. \$450

671

A Victorian burr walnut oval wine table, satinwood strung and restrained floral scroll inlay, the carved baluster column supported on a conforming tripod base. 590 x 435 x 715. \$300

672

A Victorian inlaid walnut whatnot, the three shelves of serpentine fronted form, turned supports, fretwork top gallery, white painted faux inlay. Height 1015. \$400

673

A George III oak five panelled back settle, shaped mouldings, open plain shaped arms, the upholstered seat requiring attention, three sturdy tapered cabriole type legs raised on ball feet to the front, good dark colour. 1860 x 700 x 1040. \$850

674

A Victorian burr walnut loo table, the

oval serpentine burr walnut top with quartered veneer raised on a quadrated cathedral type base, brass casters. 1420 x 1140 x 745. \$650

675

A Victorian figured walnut oval loo table, the inlaid top with quartered veneer, raised on a four-way pedestal base with carved detail. 1330 x 1020 x 760. \$600

676

A Georgian flat-front mahogany chest of six drawers, configured as three small drawers above three full-width drawers, oak lined, each drawer with oval brass plate back handles and with cockbeaded edges. Raised on bracket feet. 1020 x 520 x 1020. \$1,200

677

An impressive Victorian flame mahogany scotch chest, a narrow shaped frieze drawer to the top over two hat box and two quarter-size drawers, three full width drawers below, turned barley twist columns to each side, turned wood handles with mother-of-pearl insets, turned ivory buttons form the keyhole escutcheons, on plinth base and turned bun feet. 1250 x 600 x 1380. \$1,500

678

A Victorian oak scotch chest, the top shaped frieze drawer over two half-drawers with three full width drawers, turned wood handles, decorative corbels to each side, on plinth base, with an uncommon thick top. 1300 x 540 x 1280. \$850

679

A George III oak front fronted chest of drawers, two half drawers over three full width drawers, brass swan neck handles, ivory keyhole escutcheons, bracket feet with restrained decorative feature to each side. 1210 x 530 x 1170. See page 29. \$1,100

680

A campaign chest, three drawer section, each of the drawers with recessed bun handles and brass keyhole escutcheons, the frame with brass capping and binding. 910 x 460 x 610. \$375

681

A colonial kauri scotch chest, two hat box drawers and two small quarter-drawers to the top over three full width drawers, the centre hat box drawer with mottled panels, decorative metal handles on turned bun feet. 1120 x 530 x 1240. See page 29. \$850

681A

A colonial mottled kauri scotch chest, two hat-box drawers and two quarter size drawers over three full width drawers, wooden carved cup handles, the centre hat-box drawer with metal and turned drop handle and central panel of burr totara, rounded sides, raised on plinth base. 1210 x 540 x 1270. See page 29. \$1,500

682

A small colonial kauri cabinet, the

single door with a mottled kauri panel within a decorative border, conforming panel to each side, the top also with pressed decorative pediment, on plinth base. 620 x 370 x 780. \$300

683

A colonial kauri mirror-back side-board, high back with bevelled mirror panels, the pediment with intricately carved and pressed detail, turned column supports with two small side shelves, the base with a bow-fronted central section, a combination of four drawers and three cupboards all with heavily carved detail, and conforming copper handles, on plinth base. 1570 x 510 x 2570. \$1,250

684

A colonial mottled kauri bookcase bureau, glazed top with restrained pediment over drop front desk, the interior with traditional pigeon holes, the knee-hole front with a small drawer and cupboard to each side, on plinth base. 1290 x 490 x 2230. \$750

685

A set of eight Victorian rosewood balloon back dining chairs, in the French manner with carved detail and red self-patterned upholstered silk brocade-type seats. Some upholstery showing wear. \$800

686

A set of six Victorian walnut balloon back dining chairs, leaf and flower carved top rails, serpentine fronts, cabriole front legs and green velvet seats. \$700

688

A c.1920s banquet extension oak barley twist dining table and 12 chairs, the drawer leaf oak table with barley twist legs and carved detail extending to approx. 2200, width 980, height 770. Together with 12 Jacobean style carved oak chairs including two carvers and 10 side chairs, each with cream upholstered back panel and seats, grapevine detail, barley twist supports. See page 29. \$2,200

689

A 1920s carved oak sideboard, a companion piece to the above banquet table and 12 chairs, block moulded detail to the panelled doors flanking the three drawers, barley twist legs. 1500 x 510 x 1000. \$550

690

A Chinese rosewood extension banquet table and eight chairs, the oval table with two leaves with a frieze carved with relief scroll motifs, raised on tapering legs with spade feet; the chairs including two carver chairs, all with a Shou motif decorated back splat, the panelled seats with shaped frieze and legs conforming to the table with loose cushions. \$1,800

691

A Chinese rosewood room screen, the square panel carved in low relief with a dragon carrying a mystic pearl amongst clouds, framed with square

fret pattern in the corners and set in a stand with carved and pierced apron. The reverse with bamboo and incised calligraphy. Width 1130, height 1220. \$600

692

A decorative and sculptural Japanese mountain cedar hibachi frame, of circular shape hewn from a single tree trunk. Diameter 670, height 250. \$150

693

A Chinese rosewood vase table, decorative apron to the top with secondary shelf below, conforming restrained decoration to legs. 410 x 300 x 800. \$250

694

An unusual large c.1910 Japanese export ebonised column stand, carved in deep relief with a dragon and standing on circular platform base with scroll feet. Height 1500. \$500

695

A slab of Chinese hardwood burl (huali) as a room stand, with highly polished faces displaying the complex grain, pierced with natural fissures and with an edge of rough bark. Raised on block feet. 1350 x 870. \$500

696

A four-fold carved wooden Oriental screen, each panel decorated with battling warriors, sacred bats to the apron at base of each panel, decorated with bamboo and florals to the reverse. Each panel 440 x 1820. \$850

697

A Chinese rosewood altar table, the apron with carved floral and stylised dragons, the legs with shaped stretchers. 1520 x 420 x 930. \$500

698

A late 19thC Chinese carved rosewood large vase stand, the circular top with carved edge above a broad flared shoulder frieze, relief carved with blossoms, supported by six curved legs with floral carved detail, lower shelf. 620 x 630. \$850

700

A George III solid mahogany side table, the rectangular top with thumb-moulded edge, a single drawer to the frieze above a shaped apron, raised on cabriole legs. 830 x 520 x 740. \$1,100

701

A late 19thC oak drop-side table, with single drawer to one end, raised on tapering square section legs. 950 x 1020 x 720. \$200

702

A Georgian oak gate leg table, the plain circular four plank top supported on traditional turned leg stretcher base. Good colour and patina. The single drawer at one end has been replaced. Diameter 950, height 680. \$750

703

A late Georgian mahogany breakfront sideboard, with central single panelled door flanked by drawers with lion mask

ring handles, an angular 'temple' upstand to the back, raised on tapering square section legs terminating in brass claw feet. 1680 x 630 x 1220. \$850

704

A 19thC mahogany bookcase secretaire, the top with astragal glazing, decorative stringing and restrained pediment, the secretaire drawer with traditional small drawers and pigeon holes, brass lion heads with captured ring handles, the drawer and cupboard fronts with flame mahogany veneer and Tunbridge inlay. Requires minor repairs. 1140 x 530 x 2040. \$950

705

An early 1900s oak Arts & Crafts cabinet, two glazed doors to the front with one top panel in a stained glass leadlight floral pattern, four adjustable wooden shelves to each side. 1180 x 280 x 1680. \$650

706

An early 1900s oak Art Nouveau cabinet, one side with a leadlight glass door, coloured glass embellishment to top and base, the other side comprising a drop front bureau with two small drawers and decoratively carved cupboards below, traditional Art Nouveau pierced decoration to the side, with original metal decorative handles. 1110 x 380 x 1780. \$850

707

An early 1900s oak Art Nouveau mirror-back sideboard, on a plinth base, the top with bevelled mirrors, coloured leadlight cabinets, turned column supports with conforming decoration to the pediment, the base with three small drawers to the centre, a small quarter-drawer over a cupboard to each side with a small cupboard to the centre, the drawers and panels with Art Nouveau decoration, captured ring handles with decorative back plates. 1540 x 470 x 2150. \$1,400

708

A large Victorian mahogany display vitrine cabinet, mirror-back, glazed sides and front, with carving to the pediment and turned columns to each side, three interior shelves, on plinth base and squat bun feet. 1000 x 550 x 1900. \$1,200

709

An early 1900s oak bookcase, with restrained carved decoration to top, on plinth base, with two adjustable shelves, enamel maker's label to the back. 1220 x 320 x 1220. \$450

710

A Victorian burr walnut and marble top sideboard of small proportions, the mirror back with restrained carved decoration, the marble top of serpentine form above the two panelled doors. 1185 x 360 x 1500. \$850

711

A set of four Hepplewhite-style walnut dining chairs, with shield backs and linen upholstered seats. \$550

- 712**
Eight good quality Louis XVI-style rose-wood dining chairs, with well carved decoration of fruit, flowers, scrolls and leaves, turned and fluted front legs, shaped fronts and quality brocade fabric covers. \$3,000
- 713**
A quality 19thC French walnut and ormolu bureau plat, the rectangular top with rounded ends, the ornate marquetry inlay with floral marquetry centre in fine detail, the frieze with two secret drawers flanking an ornate ormolu panel of industrious cherubs searching for knowledge, raised on tapered and fluted legs with square section mounts, the cross stretched base of cross-over form, high quality, finely detailed ormolu mounts enhance this unique bureau. Note: this being one of the best examples we have offered. 1440 x 710 x 760. See front cover and page 29. \$15,000
- 714**
An old French blue paint finish metal cafe table with folding base, oblong shape. Distressed. Width 800. \$100
- 716**
A good 19thC French fruitwood dresser base, the plank top with clenched ends, the two frieze drawers with incised banded detail, the two cupboard doors with shaped panels, original decorative iron hinge detail and escutcheons, carved fan detail to the shaped plinth base. \$1,200
- 717**
A pair of French Louis XV style open elbow chairs, the gilt frame with acanthus leaf and floral decoration, upholstered in a black and grey striped velvet with a conforming upholstered seat cushion. 550 x 590 x 1050. \$750
- 718**
A 19thc oak Flemish style sideboard, the top with a small cupboard with one interior shelf, both doors with carved decoration, five ionic type turned pillars, the base with three shaped decorated drawers above a two door cabinet, on plinth base and turned squat bun feet, brass captured ring handles to the drawers. 1560 x 750 x 1600. \$650
- 719**
A spectacular walnut carved Black Forest long case clock, c.1900, the ornate case surmounted with a large three-dimensional owl, its wings outstretched, glass eyes, the entire case carved with fruiting grape vines, highlighted with two further smaller owls and a fox to the base, all with glass eyes, the circular brass dial with Arabic numerals, the quality movement striking on an eight rod gong, three suspended weights viewed through the glazed panel door. Provenance: Ex. an old Auckland family with whom it has been in their colonial Arney Road home for many years. Height 2600. See front cover and page 29. \$10,000
- 720**
A George III ornate marquetry inlaid oak longcase clock, by Jacob Lovelace of Exon (Exeter), the brass dial with silvered chapter ring enclosing the subsidiary seconds dial and date aperture, the eight day movement striking on a bell, the case with profuse leaf scroll inlay. Height 2070. See page 32. \$5,500
- 721**
A vintage wood framed mirror, the mirror comprises nine square panels with four decorative metal rosettes to the centre, some of the panels nicely worn, the large wooden frame with white-wash paint effect. 1000 x 1150. \$500
- 722**
A highly decorative metal framed mirror, the pediment in the form of an eagle with outstretched wings, the frame with scrolls and leaves, silvered finish. 440 x 850. \$400
- 723**
A Victorian ebonised wood mirror, of oblong shape, ornately carved and pierced with leaves, flowers and scrolls, in the baroque manner. Height 1150. \$350
- 724**
A pair of antique ornate plaster frame girandole mirrors, with gilt finish and decorated with florals, swags and bows, a double candle sconce to each mirror, some damage, 340 x 520. See page 29. \$220
- 726**
A Chinese brass table lamp base, modelled in the archaic manner. Requires fittings. Height 520. \$100
- 727**
A pair of tall crackle glaze table lamps, inverted ovoid form with pinched top, on shaped wooden stand and with cream shades. Height to top of shade 870. \$350
- 728**
A pair of vintage antique style large figured ormolu table candelabra, the classical woman figure with arm raised supporting a column with five decorative scrolling branches, each with an electric light, a central conforming light to the centre, on a pedestal base with circular alabaster platform raised on four tapered feet. Frosted glass shades. Height 990. See page 32. \$1,800
- 729**
An Edwardian oak-cased banjo barometer, white enamel dial beneath a trunk set with a thermometer (replacement). Height 740. \$150
- FINE ART —————
- 730**
Cedric Savage, Mediterranean market scene, watercolour, signed. 500 x 635. See page 32. \$750
- 731**
A large still life in the Dutch 18thC manner, oil on canvas, unsigned. 800 x 1150. \$300
- 732**
John Hall Thorpe, 'The Chinese Vase', woodblock print in colours. 470 x 320. See page 32. \$360
- 733**
Mary Jo Bedford, 'River Styx', photograph 4/10, signed, entitled, numbered and dated '07. 310 x 545. See page 32. \$300
- 734**
Hans Kramer (German 1884-1916), untitled Alpine River Landscape with Buildings, oil on board, signed. 305 x 380. \$800
- 735**
A 20thC English school, 'A Cornish Fishing Village', oil on board, signed 'Bennett'. 670 x 190. \$120
- 736**
Friedrich Ernst Wolperding (German 1815-1888), 'Kiel' a view of Kiel across the Kieler Förde, oil on canvas, signed and dated 1888. 530 x 690. See page 32. \$900
- 737**
An 18th/19thC British school, 'River Landscape with Ruins', oil on board. 125 x 175. \$200
- 738**
A 19thC British school, 'Coastal Scene with Fishermen', watercolour. 135 x 185. \$300
- 739**
Bernard Louis Borione (French b.1865), 'Checkmate', oil on canvas, signed and inscribed Paris. 605 x 700. \$350
- 740**
J Vickery, 'A Study from Life' (portrait of a white bearded man), oil on canvas, signed, dated 1873, labelled verso: 'A Study from Life by J. Vickery, Clifton, Bristol'. 850 x 670. \$1,250
- 741**
William Lee Hankey (UK 1869-1952), 'On the Golf Course Le Touquet', watercolour, signed. 300 x 420. \$600
- 742**
A rococo gilt framed oleograph, 'Temptation of a Blackamoor'. Overall 340 x 290. See page 32. \$150
- 743**
Artist unknown, English farmyard scene, Edwardian oil on canvas, signed with initials C.A. 490 x 740. Original wood frame with gilt slip. \$200
- 744**
Norbertine Von Bresslern-Roth (Austrian 1891-1978), 'Wolfe', c.1925 lino-cut in colours, signed in pencil. Note: Bresslern-Roth is recorded as one of the pre-eminent lino-cut artists of the 20thC. Her work was dominated by animals and birds and composition style influenced by L.H. Jungnickel. Her work had a profound influence on later lino-cut artists. 220 x 205. See page 32. \$1,600
- 745**
W J Gomm, 'P&O "Morea" In The Great War 1914-18', watercolour, signed, entitled and dated 1924. 385 x 645. \$250



580



576



575



679



582



724



615



681



719



589



617



681A



581



688



713



713 top view

- 746**
A bronze figure by Jean Didier Debut (French 1824-1893), 'Porteur d'eau Tunisien', depicting a Tunisian water carrier with an urn in each hand, on a naturalistic base, cold painted and deep brown patination, signed Debut, with foundry mark and with applied brass plaque inscribed 'Prix de Rome'. Height 320. See page 32. \$500
- 747**
Karl Sim, (C.F. Goldie), 'Portrait of a Maori man', pencil on buff paper, signed. 325 x 215. \$200
- 748**
Karl Sim, 'The H.L. Richardson-Te Rua-hine', pencil heightened with white on buff paper, signed and entitled. 360 x 222. \$200
- 749**
Karl Sim 'Self-portrait with artists' signatures and epithet', pencil and ink. 320 x 210 (visible). \$250
- 750**
John Crawford (1951-2012), 'Reclining Nude', mixed media on rag paper, signed and dated '89. 590 x 750. \$200
- 751**
Megan Jenkinson, 'Britannia - Britain', 'Britannia Weeps for the Loss of Her Colonies, (From the Virtues Series)', Cibachrome Photograph Collage 2/2, entitled and inscribed 'We are under no king; we must each look to ourselves', entitled, inscribed, signed and dated 1996 on reverse. 195 x 180 and 495 x 580 (diptych). Together with the book 'Under The Aegis, The virtues' by Megan Jenkinson, 199, signed. See inside back cover. \$3,500-\$4,500
- 752**
Russell Clark, untitled seated figure, charcoal on buff paper, copy of inscription on reverse. 310 x 195. \$300
- 753**
Artist unknown, female nude, oil on board. 200 x 145. \$100
- 754**
Saffronn te Ratana, untitled figure study, ink and graphite on paper, initialled and dated 29.7.00. 190 x 140. \$150
- 755**
A. Lois White, Two Figure Studies of Women, watercolour and graphite on paper, one signed, certificated on reverse. 160 x 260. See page 32. \$800
- 756**
Piera McArthur, untitled Figure Study, pastel and watercolour on paper, signed. 525 x 395. See page 32. \$1,000
- 757**
Saffronn Te Ratana, untitled Figure Study, mixed media. 595 x 185. See page 32. \$350
- 758**
Phillip Trusttum, untitled 'Portrait of a Man', charcoal, signed and dated '92. 255 x 170. \$140
- 759**
George Wood, 'Polynesian Head', pencil sketch. 190 x 140. \$400
- 760**
George Wood, 'Polynesian Head', pencil sketch. 125 x 70. \$400
- 761**
Ilene Rosa Stichbury, 'Portrait of a Maori Woman with Purple Head Scarf', oil on canvas, unsigned. 250 x 160. \$250
- 762**
Robyn Kahukiwa, 'Hinewhehi', print 10/200, signed and dated '03. 230 x 320 (unframed). \$100
- 763**
Stanley Palmer, 'Tree-North Manukau', bamboo engraving, signed, entitled, numbered 9/50 and dated 1972. 400 x 550. See page 32. \$250
- 764**
Stanley Palmer, 'Whatipu', bamboo engraving, signed, entitled, numbered 30/60 and dated 1975. 320 x 520. \$220
- 765**
Heinz Boehnke, 'Surfcasting - Muriwai', oil on board, signed and dated 1975, labelled and entitled on reverse. 370 x 495. \$150
- 766**
Raymond Ching, 'Eurasian Sparrow Hawk', watercolour on paper, signed, entitled, inscribed and dated 1966. 680 x 465. See inside back cover. \$4,500
- 767**
Peter McIntyre, 'A Girl on the Beach', oil on canvas, signed, original label on reverse with title and details, original Exhibition invitation attached. 495 x 600. Note: Our elderly vendor recalls the artist informing him that this painting was 'one of the best that he had done'. See front cover and inside back cover. \$8,500
- 768**
Peter McIntyre, 'Rangitikei River Through the Trees', oil on artist's board, signed. Note: Another painting on reverse, 'Lake & Mountain Scene', signed. 325 x 505. See inside back cover. \$3,400
- 769**
Simon Payton, 'Bay of Islands' an extensive view, acrylic on paper, signed, dated '86 and with 'Samuel Mardsen' stamp. 780 x 565. \$350
- 770**
Simon Payton, 'Bay of Islands landscape' an extensive view, acrylic on paper, signed, dated '87 and with 'Samuel Mardsen' stamp. 555 x 790. \$350
- 771**
Simon Payton, 'Bay of Island series', abstract landscape, acrylic on paper, 'Samuel Mardsen' stamp. 560 x 790. \$325
- 772**
Simon Payton, 'Bay of Islands series', abstract yacht sails, acrylic on paper, 'Samuel Mardsen' stamp. 560 x 790. \$325
- 773**
Simon Payton, 'Bay of Islands series', wharf and boat, acrylic and pencil on paper, signed, dated '87, 'Samuel Mardsen' stamp. 370 x 555. \$250
- 774**
Simon Payton, 'Bay of Islands series', landscape with church, acrylic on paper, 'Samuel Mardsen' stamp. 370 x 555. \$175
- 775**
Simon Payton, 'Bay of Islands series', abstract yacht sails, acrylic on paper, 'Samuel Mardsen' stamp. 260 x 405. \$175
- 776**
Simon Payton, 'Bay of Islands series', navigation markers, pencil on paper, signed, dated '87, 'Samuel Mardsen' stamp. 430 x 300. \$175
- 777**
Simon Payton, 'Bay of Islands series', anchored yachts, watercolour, signed, dated '87, 'Samuel Mardsen' stamp. 350 x 530. \$200
- 778**
Simon Payton, 'Bay of Island series', wharf and yachts, acrylic on paper, signed, dated '86 and with 'Samuel Mardsen' stamp. 560 x 790. \$350
- 779**
Garth Tapper, 'The Firefighters', No. 1, oil on board, signed and dated '94, labelled and entitled on reverse. 365 x 440. See inside back cover. \$2,800
- 780**
Robin Morrison, 'Power Lines', vintage cibachrome print. 240 x 360. \$1,800
- 781**
Steve Harris, 'Pitcher with Fruit and Wrappers', acrylic on canvas, signed, 610 x 1220. Provenance: Purchased Ferner Galleries, Auckland. See back cover. \$5,500
- 782**
Peter Brown, 'Freesias', oil on artist's board, signed, entitled on reverse. 290 x 340. See page 32. \$250
- 783**
Eight Betty Beadle prints, 'Pollination II', 'Seed Shed', 'Weeding' and others from editions of 25, signed and dated 1993. Each approx. 35 x 27 (unframed). \$250
- 784**
Two works by Peggy Spicer, a book-mark and a street scene. Framed and glazed. \$300
- 785**
William Henry Raworth (1821-1904), Extensive landscape with raupo whare and cattle, watercolour. 270 x 760. See inside back cover. \$250
- 786**
Alfred W. Walsh, Colonial timber farm house, watercolour, signed. 440 x 635. See inside back cover. \$850
- 787**
G.A. Genet 'Mt Sefton', oil on board, signed and dated '73. 550 x 800. \$150
- 788**
Birtchnell Delph, 'Mount Ruapehu', watercolour, signed. 290 x 465. \$150
- 789**
Aston Greathead, 'The Leibig Range, MacKenzie Country', oil on board. See inside back cover. \$225

- 790**
Graham Braddock, 'Afternoon Glory', Clements Rd, Kaimanawa Forrest, oil on board, signed. Details on reverse. 550 x 750. \$750
- 791**
Bessie Kendon (Blomfield), untitled, 'Towards Rangitoto', oil on board, signed and dated 9/11/23. 180 x 310. \$150
- 792**
John Crichton, untitled 'Coastal Landscape', watercolour on paper, signed. 290 x 400. \$180
- 793**
Ruth Cole, 'River Valley', oil on board, initialled, signed, entitled, dated 1994 and detailed on reverse. 137 x 247. \$100
- 794**
William George Baker (1864-1929), 'Hutt River Landscape', signed and entitled. 470 x 700. See back cover. \$1,100
- 795**
Three works by May Gilbert, 'Houses & Farm Buildings', in watercolour, charcoal and ink. Largest 260 x 320. \$450
- 796**
Birtchnell Delph, 'Mt Algidusa, Rakaia River from Double Hill', watercolour, signed. 265 x 365. \$100
- 797**
William Menzies Gibb, 'Grafton Bridge and Auckland Harbour', watercolour, signed. 250 x 350. \$250
- 798**
Aston Greathead, 'South Island Mountainous Valley Scene', oil on board, signed and dated '73. 375 x 525. See back cover. \$400
- 799**
Charles Henry Howarth, 'Entrance to Wellington Harbour', oil on canvas board, signed. 190 x 335. \$250
- 800**
Elizabeth Stevens, 'Farm Abandoned', acrylic on board, signed, named, entitled and dated 1996 on reverse. 405 x 695. \$200
- 801**
A. Davis, 'Wahine Toa', acrylic on board, signed, entitled and dated '65. 1150 x 265. \$200
- 802**
Betty Clegg, 'The Red Hat', acrylic on board, signed and dated '04. 390 x 285. See back cover. \$400
- 803**
Louise Henderson, 'Hokianga', ink and pastel on paper, signed and entitled. 200 x 345. See back cover. \$400
- 804**
Ida Careh, 'The Spinning Wheel', woodcut, signed, monogrammed in the block and entitled. 150 x 100. \$100
- 805**
William James Reed, 'Blue Spur', oil on board, signed, catalogue label on reverse. 240 x 345. See back cover. \$800
- 806**
Rudi Gopas, 'Coastal Landscape', watercolour. 190 x 240. See back cover. \$800
- 807**
Louise Henderson, 'The Dream', lithograph, signed, entitled and numbered 5/20. 290 x 500. \$300
- 808**
Aileen Innes-Kemp, 'Carrying the Sun by Handfuls to Another Room', five plate woodblock print No. 5/7, signed, entitled, numbered and dated '86, labelled on reverse. 450 x 360. \$150
- 809**
J. McKibbin, untitled 'Fish & Jug', acrylic on paper, signed and dated '88. 745 x 1075. \$250
- 810**
Sylvia Siddell, untitled 'Still Life, Fish and Jug', acrylic on board, signed. 100 x 100. \$110
- 811**
Hanno Rol, 'Auckland Series 2000/6', watercolour (Windsor & Newton) on Arches paper, signed and dated '00, labelled and detailed on reverse. 360 x 560. \$200
- 812**
Tracey Tawhiao, 'By George What a Con', oil stick and acrylic on 'The Herald' newspaper, Ferner Gallery Certificate on reverse. 575 x 395. See back cover. \$280
- 813**
Reiko Elliot, untitled, mixed media, signed and with seal mark. 95 x 95. \$110
- 814**
N.Z. contemporary artist unknown, two untitled works, mixed media, unsigned. 300 x 210 each. Mark Braunias, untitled, mixed media. See back cover. \$250
- 815**
N.Z. contemporary artist unknown, two untitled works, mixed media, unsigned. 300 x 210 each. Mark Braunias, untitled, mixed media. \$250
- 816**
Philip Clairmont, 'Study Window', mixed media on paper, entitled and dated 1977. 280 x 175. See back cover. \$450
- 817**
Anna Palmer, untitled still life, pastel on paper, signed and dated '86. 345 x 555. \$120
- 818**
Anna Palmer, untitled Still Life, pastel on paper, signed and dated '88. 545 x 920. \$250
- 819**
William James Reed, 'Palmerston North Landscape', gouache on paper, signed, detailed and entitled on reverse. 370 x 480. See back cover. \$650
- 820**
Norman Wilkinson? (signed indistinctly), 'The Queen Mary', oil on board. 210 x 275. \$125
- 821**
Tom Burnett, 'Two Crayfish', coloured pencil and ink on paper, unsigned, with gallery receipt dated 1993. 490 x 600. \$150
- 822**
Lois McIvor, 'Sea + Sky', acrylic on canvas, signed and dated '84, signed, dated and entitled on reverse. 202 x 202. \$350

END OF SALE



720



728



730



736



746



664



742



733



732



755



782



757



744



756



763

— Prices realised (hammer price) Cordys 19th September 2017 Antique & Art Auction —

LOT	\$	LOT	\$	LOT	\$	LOT	\$	LOT	\$	LOT	\$	LOT	\$	LOT	\$	LOT	\$	LOT	\$
1.....	\$220	91.....	\$50	194.....	\$260	278...	\$1,150	376.....	\$120	482.....	\$390	557.....	\$120	633.....	\$750	717.....	\$100		
3.....	\$100	92.....	\$560	195.....	\$170	282.....	\$300	377.....	\$50	483.....	\$240	559.....	\$80	635.....	\$550	719.....	\$550		
4.....	\$275	99.....	\$80	196.....	\$170	283.....	\$100	379.....	\$160	485.....	\$110	560.....	\$80	636.....	\$550	723.....	\$250		
5.....	\$360	100.....	\$425	197.....	\$720	284.....	\$375	380.....	\$200	486.....	\$320	561.....	\$110	650.....	\$475	727.....	\$525		
7.....	\$80	103.....	\$60	198.....	\$65	285.....	\$750	381.....	\$625	487.....	\$250	562.....	\$150	652...	\$2,400	730.....	\$300		
8.....	\$325	106.....	\$70	199.....	\$200	286.....	\$320	382....	\$1,425	488...	\$1,500	563.....	\$130	653.....	\$375	732.....	\$875		
9.....	\$300	107.....	\$150	200.....	\$200	287.....	\$330	384.....	\$150	489.....	\$380	564.....	\$80	654.....	\$200	733.....	\$900		
13.....	\$225	110.....	\$50	201.....	\$190	288.....	\$370	385.....	\$60	492.....	\$420	565.....	\$285	658.....	\$450	734.....	\$150		
15.....	\$250	111.....	\$40	202.....	\$190	290.....	\$120	386....	\$2,800	493.....	\$150	566.....	\$310	660.....	\$650	735.....	\$200		
16.....	\$220	112.....	\$200	203.....	\$210	291.....	\$60	387.....	\$180	494...	\$2,800	567.....	\$80	661.....	\$400	736.....	\$320		
18.....	\$280	113A.....	\$50	204.....	\$200	292.....	\$140	388.....	\$140	495...	\$1,500	568.....	\$130	661A...	\$650	737.....	\$475		
21.....	\$50	116.....	\$400	205...\$	\$1,200	293...\$	\$1,000	389.....	\$560	496.....	\$410	569.....	\$450	662.....	\$600	738.....	\$700		
22.....	\$385	117...\$	\$1,000	206...\$	\$1,700	295.....	\$120	391.....	\$190	497...	\$5,250	570.....	\$240	663.....	\$190	739.....	\$300		
23.....	\$180	118.....	\$350	207...\$	\$1,400	298.....	\$280	392.....	\$80	498...	\$6,100	572.....	\$100	665.....	\$80	740.....	\$200		
26.....	\$450	119.....	\$400	209.....	\$750	299.....	\$110	393.....	\$540	499...	\$3,500	573.....	\$275	668.....	\$750	741.....	\$250		
27.....	\$240	120.....	\$395	211.....	\$300	300.....	\$60	394.....	\$180	500...\$	\$3,600	575.....	\$150	669.....	\$850	742.....	\$950		
28.....	\$200	121.....	\$550	212.....	\$280	301.....	\$230	396.....	\$210	502...\$	\$1,270	576.....	\$320	671.....	\$675	743.....	\$160		
29.....	\$200	123.....	\$210	213.....	\$250	302.....	\$300	397.....	\$75	503.....	\$900	577.....	\$300	672.....	\$500	744.....	\$475		
30.....	\$340	124.....	\$120	214.....	\$375	304.....	\$210	398.....	\$150	504...\$	\$1,300	578.....	\$375	673.....	\$275	745.....	\$340		
31.....	\$220	125.....	\$130	215.....	\$100	305.....	\$100	403.....	\$160	505.....	\$80	580.....	\$280	674...\$	\$1,300	749.....	\$800		
32.....	\$750	126.....	\$150	216.....	\$260	306.....	\$225	404.....	\$110	506.....	\$125	581.....	\$300	675.....	\$850	750.....	\$500		
33.....	\$300	128.....	\$70	219.....	\$210	307.....	\$100	405.....	\$210	507.....	\$60	582.....	\$350	676...\$	\$1,600	751.....	\$260		
34.....	\$270	130.....	\$220	220.....	\$300	309.....	\$180	407.....	\$280	508.....	\$750	584.....	\$670	677.....	\$500	752.....	\$140		
42.....	\$160	131.....	\$200	221.....	\$370	310.....	\$60	408.....	\$400	509...\$	\$1,000	587.....	\$650	678.....	\$200	753.....	\$150		
45.....	\$130	132.....	\$160	222.....	\$360	311.....	\$140	409.....	\$100	510.....	\$900	588.....	\$740	679.....	\$400	755.....	\$500		
46.....	\$450	133.....	\$500	223.....	\$250	312...\$	\$1,600	410.....	\$350	511.....	\$220	589.....	\$800	680.....	\$250	756...\$	\$2,500		
47...\$	\$1,500	134.....	\$450	224.....	\$370	313.....	\$750	413.....	\$125	512.....	\$700	590.....	\$400	681.....	\$220	757.....	\$180		
49.....	\$325	135.....	\$60	225.....	\$460	315.....	\$220	414.....	\$120	513.....	\$190	591.....	\$850	682.....	\$440	758...\$	\$1,500		
55.....	\$190	136.....	\$225	229.....	\$180	316.....	\$260	418.....	\$475	515.....	\$170	593.....	\$850	683.....	\$450	760.....	\$900		
56.....	\$100	138.....	\$575	230.....	\$220	317.....	\$825	422.....	\$475	516.....	\$300	594.....	\$500	684.....	\$525	761.....	\$130		
57.....	\$345	139.....	\$120	231.....	\$550	319.....	\$375	422A...	\$200	517.....	\$280	595.....	\$600	685.....	\$350	762.....	\$275		
58.....	\$550	140.....	\$370	232.....	\$275	321.....	\$200	423.....	\$500	519.....	\$130	596...\$	\$1,500	686...\$	\$2,300	763.....	\$225		
58A...	\$375	141.....	\$700	233.....	\$80	329.....	\$70	425.....	\$180	521...\$	\$4,000	598...\$	\$1,400	687.....	\$175	767.....	\$120		
59...\$	\$3,900	144...\$	\$1,650	234.....	\$190	330.....	\$80	426.....	\$275	522...\$	\$4,450	599...\$	\$1,700	688...\$	\$1,550	769...\$	\$1,100		
60.....	\$170	145.....	\$150	235.....	\$270	337.....	\$200	427.....	\$130	523.....	\$150	600.....	\$800	689.....	\$500				
61.....	\$750	146...\$	\$1,000	237.....	\$220	340.....	\$110	429.....	\$140	525.....	\$100	601.....	\$250	690.....	\$675				
64.....	\$100	155...\$	\$2,000	238.....	\$60	341.....	\$155	430.....	\$120	526.....	\$100	603.....	\$725	691.....	\$700				
65.....	\$200	155A...	\$850	240.....	\$130	346.....	\$100	432...\$	\$1,350	529.....	\$200	604.....	\$390	692.....	\$160				
66.....	\$500	162.....	\$100	242.....	\$320	348.....	\$35	434.....	\$250	530.....	\$720	605.....	\$325	693...\$	\$1,250				
67.....	\$150	163.....	\$90	243.....	\$300	349.....	\$80	435...\$	\$2,800	532.....	\$650	607.....	\$750	694...\$	\$1,100				
68.....	\$320	164.....	\$200	247.....	\$90	350.....	\$475	437.....	\$400	533.....	\$270	608.....	\$500	695...\$	\$1,450				
69.....	\$110	166.....	\$150	248.....	\$210	352.....	\$80	438.....	\$225	536.....	\$70	610...\$	\$1,900	697.....	\$50				
70.....	\$160	172.....	\$250	252.....	\$320	353...\$	\$1,000	441.....	\$240	537.....	\$40	611.....	\$200	698.....	\$50				
71.....	\$250	174...\$	\$4,600	253.....	\$150	354.....	\$180	442.....	\$320	538.....	\$110	613.....	\$360	699.....	\$210				
72.....	\$170	175.....	\$240	254.....	\$120	355.....	\$100	443.....	\$260	539.....	\$100	615.....	\$550	700.....	\$275				
75.....	\$160	176.....	\$180	255.....	\$70	356.....	\$150	444...\$	\$2,500	540.....	\$70	617...\$	\$2,200	702.....	\$50				
76.....	\$80	177.....	\$380	257.....	\$100	358.....	\$240	446.....	\$400	541.....	\$70	617A	\$1,000	704.....	\$120				
77.....	\$155	180.....	\$60	260.....	\$100	360.....	\$140	447.....	\$340	542.....	\$75	620...\$	\$1,200	705.....	\$110				
78.....	\$60	181.....	\$450	267.....	\$220	361.....	\$320	449.....	\$320	544.....	\$240	621.....	\$500	706.....	\$140				
80.....	\$60	182.....	\$170	269.....	\$340	362.....	\$100	450.....	\$175	546.....	\$150	622.....	\$485	707.....	\$110				
81.....	\$60	186.....	\$445	270...\$	\$2,500	365.....	\$520	450A...	\$900	547.....	\$250	622A...	\$250	708.....	\$160				
82.....	\$50	187...\$	\$1,050	271.....	\$90	366.....	\$400	451.....	\$120	548.....	\$400	623.....	\$850	709.....	\$175				
85.....	\$60	187A...	\$300	271A...	\$220	367.....	\$180	455.....	\$550	549.....	\$425	624.....	\$420	710.....	\$120				
86.....	\$100	188.....	\$390	272.....	\$190	368.....	\$450	461.....	\$400	550.....	\$200	626.....	\$600	711.....	\$40				
87.....	\$150	190.....	\$50	273.....	\$150	369.....	\$80	463.....	\$100	552...\$	\$3,100	627.....	\$450	712.....	\$280				
88.....	\$40	191...\$	\$1,000	275.....	\$130	370.....	\$280	469.....	\$90	553...\$	\$3,300	630.....	\$900	713.....	\$290				
89.....	\$160	192.....	\$200	276.....	\$220	372.....	\$675	480.....	\$300	554...\$	\$6,500	631.....	\$870	714.....	\$250				
90.....	\$150	193.....	\$180	277.....	\$230	375.....	\$300	481.....	\$190	555.....	\$475	632.....	\$575	715.....	\$200				



Postal Bidding

Ph: (09) 523 1049 / Email: info@cordys.co.nz / www.cordys.co.nz
There is a 17.25% Buyer's Premium (including GST) on the hammer price

Bidding Number		If applicable, otherwise we use your surname
Full Name		
Address		
Email Address		
Phone	Bus.	A/H

Lot #	Brief Description	Bid Amount \$

Please bid on my behalf at the above sale for the following lots. These bids are to be executed as cheaply as permitted by other bids or reserves. Buyers are reminded to get their bids in early to ensure their placement. I agree to comply with the Conditions of Sale as printed in this Catalogue.

SIGNATURE Date: / / 2017

Catalogue Subscription

Please return completed form to Cordy's Auckland office,
 PO Box 74071 Greenlane Auckland 1546

Please forward me the following catalogues,
 (postage within New Zealand included,
 overseas subscribers please add costs as noted):

	Tick	NZ Cost	Australia /Pacific	EUROPE /USA
Antiques, Estate Jewellery, Oriental, Tribal Art, Fine & Applied Art for Monthly Photo Catalogues	<input type="checkbox"/>	\$100	\$150	\$200

All costs noted are in New Zealand dollars. I enclose my cheque payable to John Cordy Ltd for the above ticked catalogues, totalling NZ\$_____.00

If extra catalogues in the categories chosen are produced, these will be sent to you at no extra cost. Overseas subscribers must provide a bank draft in New Zealand dollars to John Cordy Ltd.

Name _____

Address _____

City _____ Country _____

Conditions of Sale

1. The highest bidder to be the purchaser subject to the Auctioneers having the right to refuse the bid of any person. Should any dispute arise as to the biddings, the lot in dispute to be immediately put up for sale again at the preceding bidding, or the Auctioneer may declare the purchaser which will be conclusive.
2. No person shall advance less at a bid than a sum nominated by the Auctioneer and no bid shall be retracted.
3. All lots are sold subject to the right of the seller or his agent to bid or else to impose a guide or reserve price.
4. The purchaser to fill in bidding form before the sale giving details of name, address, bank etc, and to sign such form declaring knowledge of buyers obligations. Immediately after the sale, the purchaser to pay down 10% of the purchase price in part payment and shall pay the balance within five days of the date of sale. All lots to be paid for in full and removed from Cordy's premises same week of sale.
5. The purchaser shall pay to John Cordy Limited (Cordy's) a premium of 15% of the hammer price together with GST on such premium at the current rate.
6. All lots are sold as shown and with all faults, imperfections (visible or not) and errors of description. Neither Cordy's or its vendor are responsible for errors of description or for the genuineness or authenticity of any lot or for any fault or defect in it and make no warranty whatever. Buyers proceed upon their own judgement.
7. Cordy's act as agents and have full discretion to conduct all aspects of the sale and to refuse any bidding or to withdraw any lot or lots from sale without in either case giving any reason.
8. All lots are at the buyers risk from the fall of the hammer and are to be taken away at the buyers expense immediately after the sale. Cordy's will not be responsible if any lot is lost, stolen, damaged or destroyed after the sale. If the lots are not cleared and paid for the same week of the sale they may then be sold immediately either publicly or by private treaty, without notice being given to the defaulter.
9. Upon failure of the purchaser to comply with any of the above conditions, the money deposited in part payment shall be forfeited and the defaulter shall make good any loss arising from the re-sale together with the charges and expenses in respect of both sales.
10. No goods are to be removed while selling is in progress. Receipted invoices must be produced prior to delivery of any lot.
11. The Auctioneers reserve the right to request identification in the case of any purchaser not known to the Auctioneer who pays by cheque and can insist on cash or a bank cheque.
12. Charging to credit cards or payment by overseas cheques will not be accepted as means of payment.
13. No person purchasing an item which falls within the provisions of the Antiquities Act 1975 or the Arms Act 1958 shall be entitled to take possession of the item unless and until such person has produced to Cordy's a licence under the appropriate Act.
14. All lots to be paid for in full and removed from the premises the same week of the sale.
15. The buyer shall be responsible for any removal or storage charges on any lot not taken away the same week of the sale. If for any reason storage is not available at Cordy's premises arrangements will be made to transport and store uncollected goods elsewhere solely at the buyers expense. Cordy's will not be liable to the Purchaser for them in any respect.
16. The Auctioneer cannot be held responsible for any injury or damage to persons or property through attempts to fire firearms which are sold as collectors items only.
17. All electrical goods are sold on the basis of their decorative value only and should be assumed not to be operative. It is essential that prior to any intended use, the electrical system is checked and approved by a qualified electrician.

Important Notice

All lots sold 'as is' in accordance with Paragraph 6 of the Conditions of Sale. Intending buyers should always satisfy themselves as to the condition and description of any lot and their attention is drawn to Paragraph 6.

Postal Bids

Instructions to bid at sales are accepted by Cordy's and are carried out free of charge. Lots will always be bought as favourably as allowed by other such bids, bidding in the saleroom and any reserve. VENDORS are requested to read and are bound by the Conditions

of Sale printed on the reverse side of Cordy's Contract to Sell. PRESALE ESTIMATES are intended as a guide only. Cordy's staff are available during viewing times to assist prospective buyers with estimates and auction room procedures.

Charges and Commissions

1. All lots sold with hammer price between \$1.00 to \$99.00 will be charged at 17% commission.
2. All lots sold with hammer price \$100.00 and over will be charged at 12% commission.
3. Vendors will be charged insurance at the rate of 1% against each lot. GST at the current rate will be charged against expenses.

A buyers premium of 15% will be charged and GST at the current rate will be charged on the premium.
All lots sold are to be paid in full and removed from Cordy's premises the same week of sale.

General Information

INSPECTIONS are made and advice given concerning the sale of Antiques and Works of Art free of charge at Cordy's in Auckland, and for a reasonable fee elsewhere.

VALUATIONS for insurance, probate or family division are undertaken on either a quotation basis or a small percentage plus travelling expenses.

IF BUYING FOR EXPORT, please enquire as to GST status of vendors.

INSTRUCTIONS to bid at sales are accepted by Cordy's and carried out free of charge. Lots will always be bought as cheaply as is allowed by the bidding in the saleroom and any reserves imposed.



CORDY'S
A U C K L A N D

Upcoming Auctions

2nd October	Estate/Collectable Auction	View Friday & Monday prior
9th October	Estate/Collectable Auction	View Friday & Monday prior
17th October	Antique & Art Auction	Entries close 22nd September
24th October	Estate/Collectable Auction	View Friday & Tuesday prior (Monday is a holiday)
31st October	The Anneke Borren Collection	Special one vendor auction
6th November	Estate/Collectable Auction	View Friday & Monday prior
14th November	Antique & Art Auction	Entries close 20th October
20th November	Estate/Collectable Auction	View Friday & Monday prior
27th November	Estate/Collectable Auction	View Friday & Monday prior
4th December	Estate/Collectable Auction	View Friday & Monday prior
12th December	Antique & Art Auction	Entries close November 17th
18th December	Special Christmas Auction	View Friday & Monday prior
Cordy's closes Friday 22nd at midday		



JOHN CORDY LIMITED

FINE ART AUCTIONEERS AND APPRAISERS

180 GREAT SOUTH ROAD, REMUERA, AUCKLAND 1051, NEW ZEALAND

P.O. BOX 74071 GREENLANE PHONE (09)523-1049 FAX (09)520-7186

EMAIL info@cordys.co.nz WEBSITE www.cordys.co.nz



751



768



766



767



785



779



786



789



781



794



798



803



802



812



814



816



805



806



819